

# Demographic Impacts of Migration to the UK: A Geographical Perspective

Tony Champion

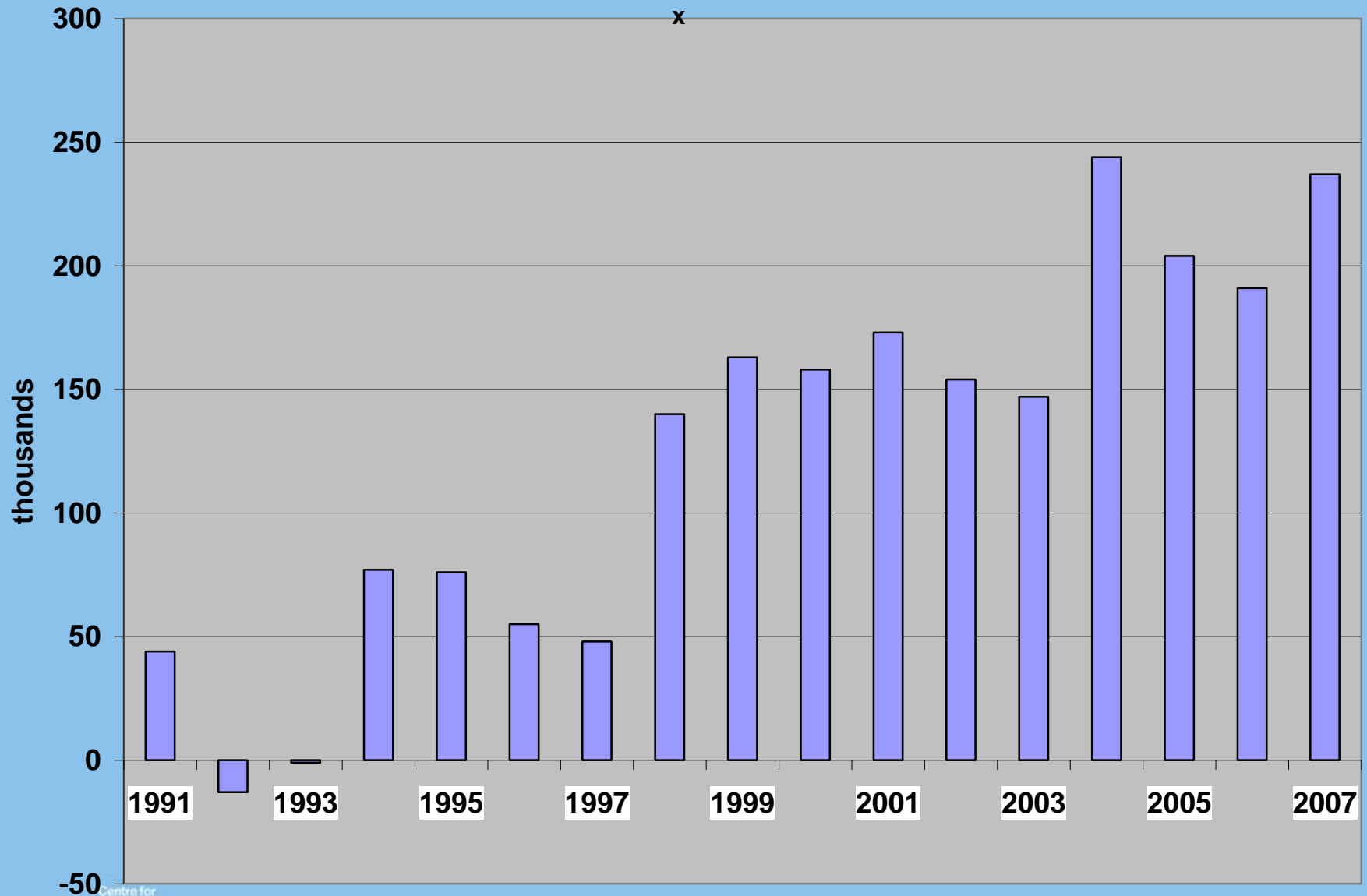
RSA Conference on 'Migration and Migrant Workers in the UK and an Enlarged European Union', at GO-EAST, Cambridge, 1 December 2008



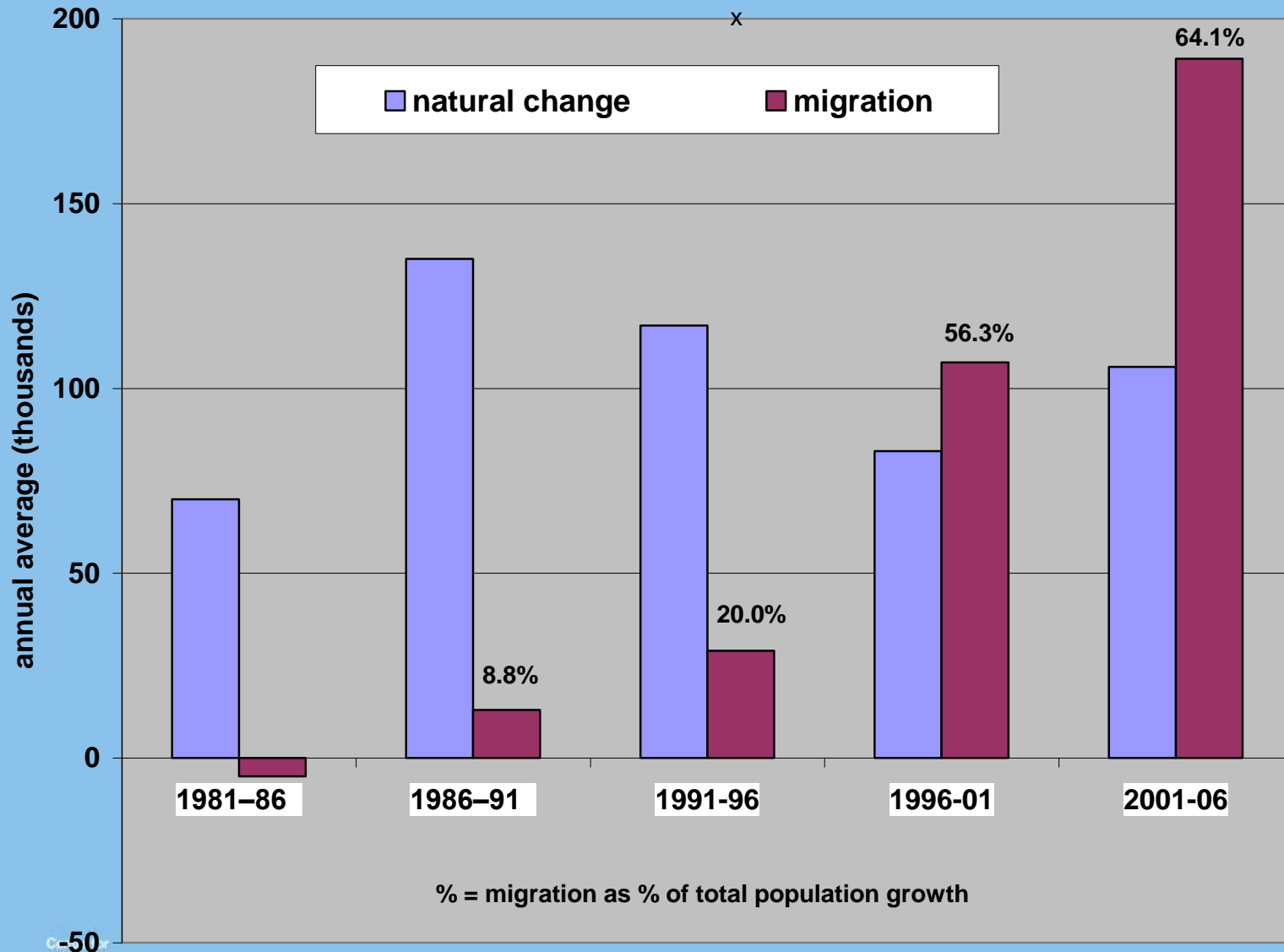
# Demographic impacts: some questions

- How much has net immigration increased in recent years?
- How has its share of UK population growth changed?
- In what ways does its contribution to population growth vary across the country (England) and how much has this changed since 2001?
- What differences in this are there between migrants from EU Accession states and those from other countries?
- How do the 'rates' of gross immigration vary between places?
- How to allow for the varying length of stays, especially 'short-term migration'?

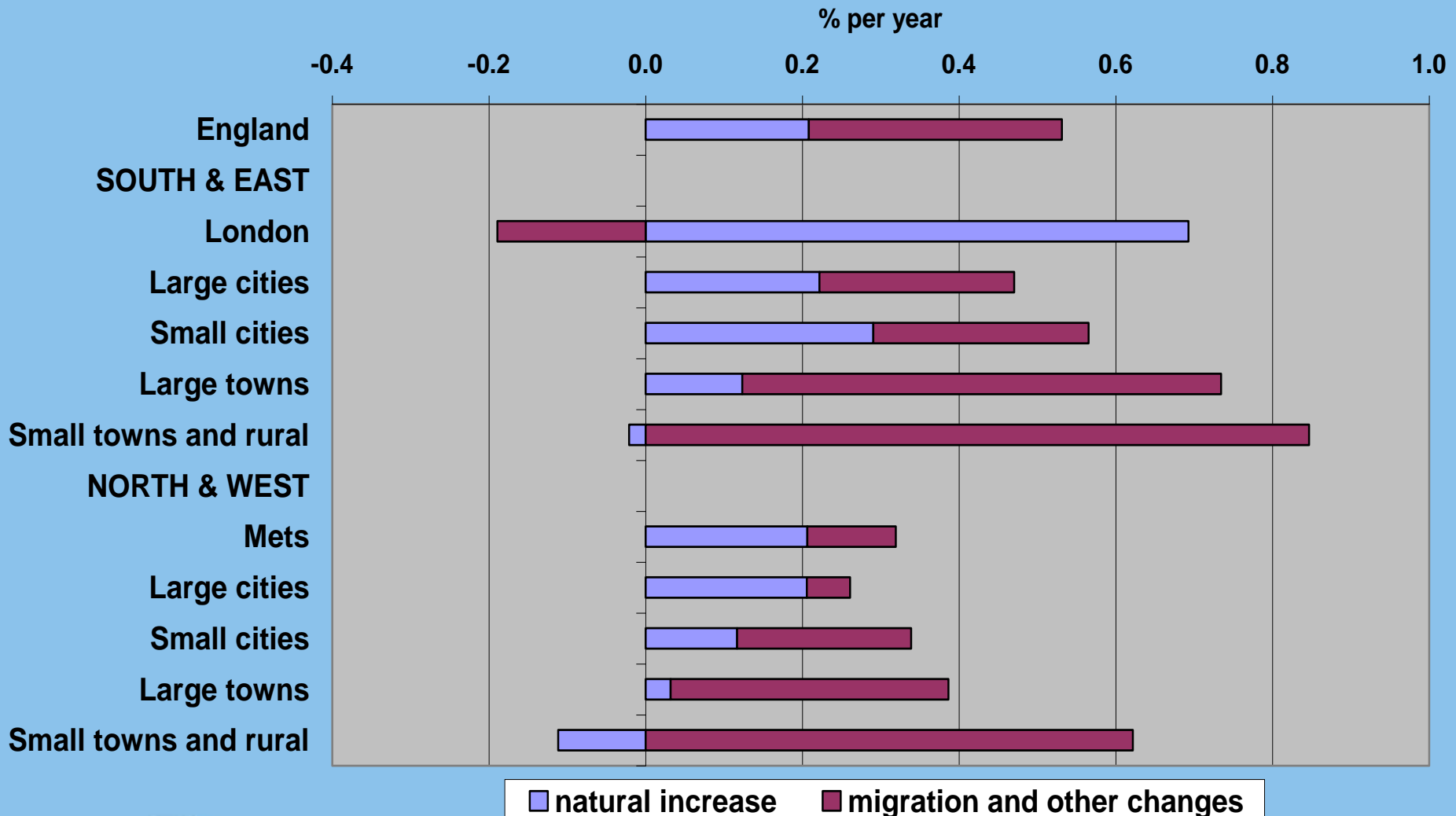
# Net migration balance, UK, 1991-2007, thousands



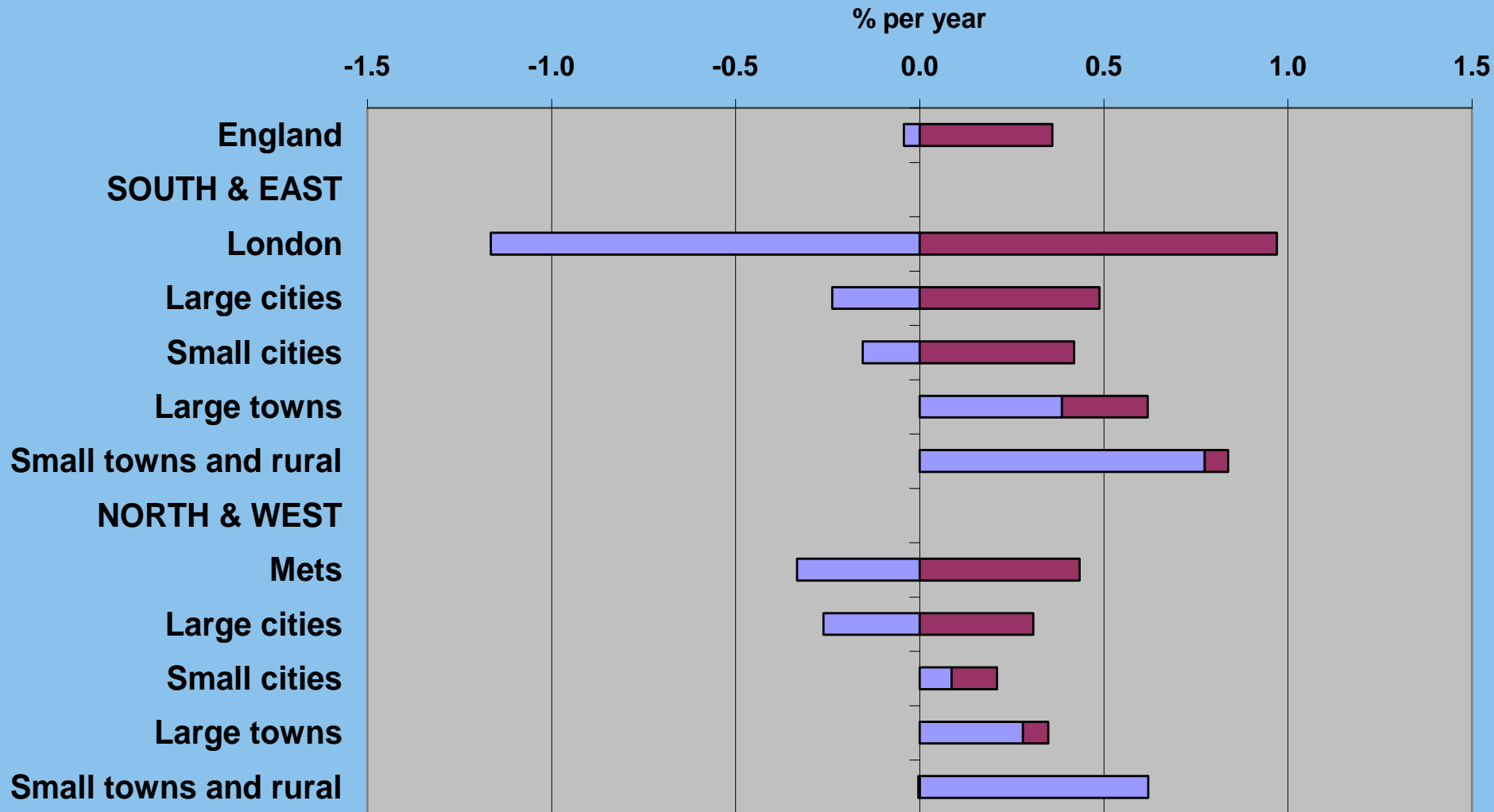
# Contribution of migration to UK population change, 1981-86 to 2001-06



# Natural increase and migration, 2001-2006, by LA type



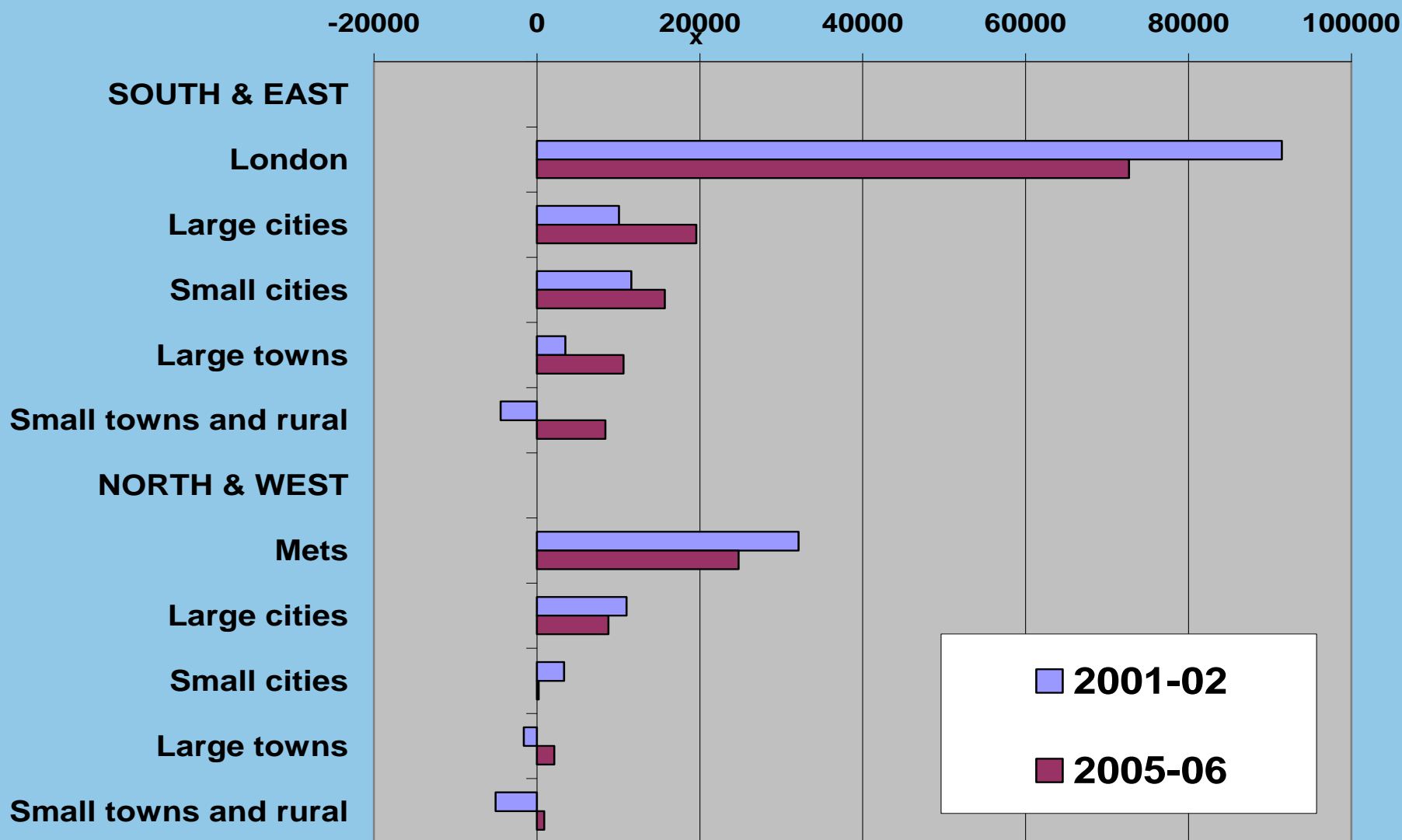
# Within-UK and international migration, 2001-2006, by LA type



■ within-UK migration ■ international migration

Source: calculated from ONS components of change data for best fit of LAs to SOCR classification.

# Net international migration, England, by LA type, 2005-06 compared with 2001-02, thousands



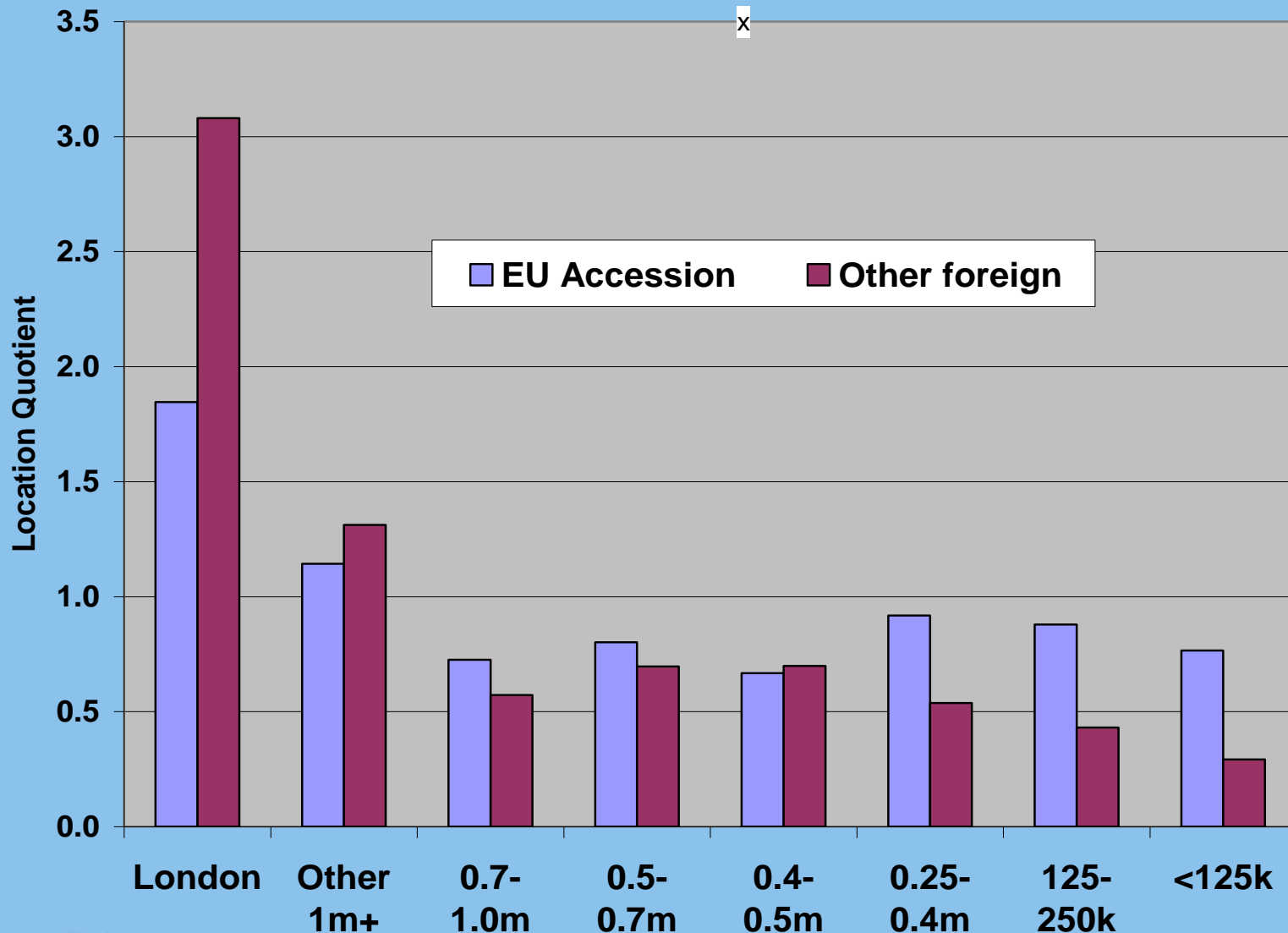
Source: calculated from ONS components of change data for best fit of LAs to SOCR classification.

# Distribution of England's immigrant flows between TTWA size groups

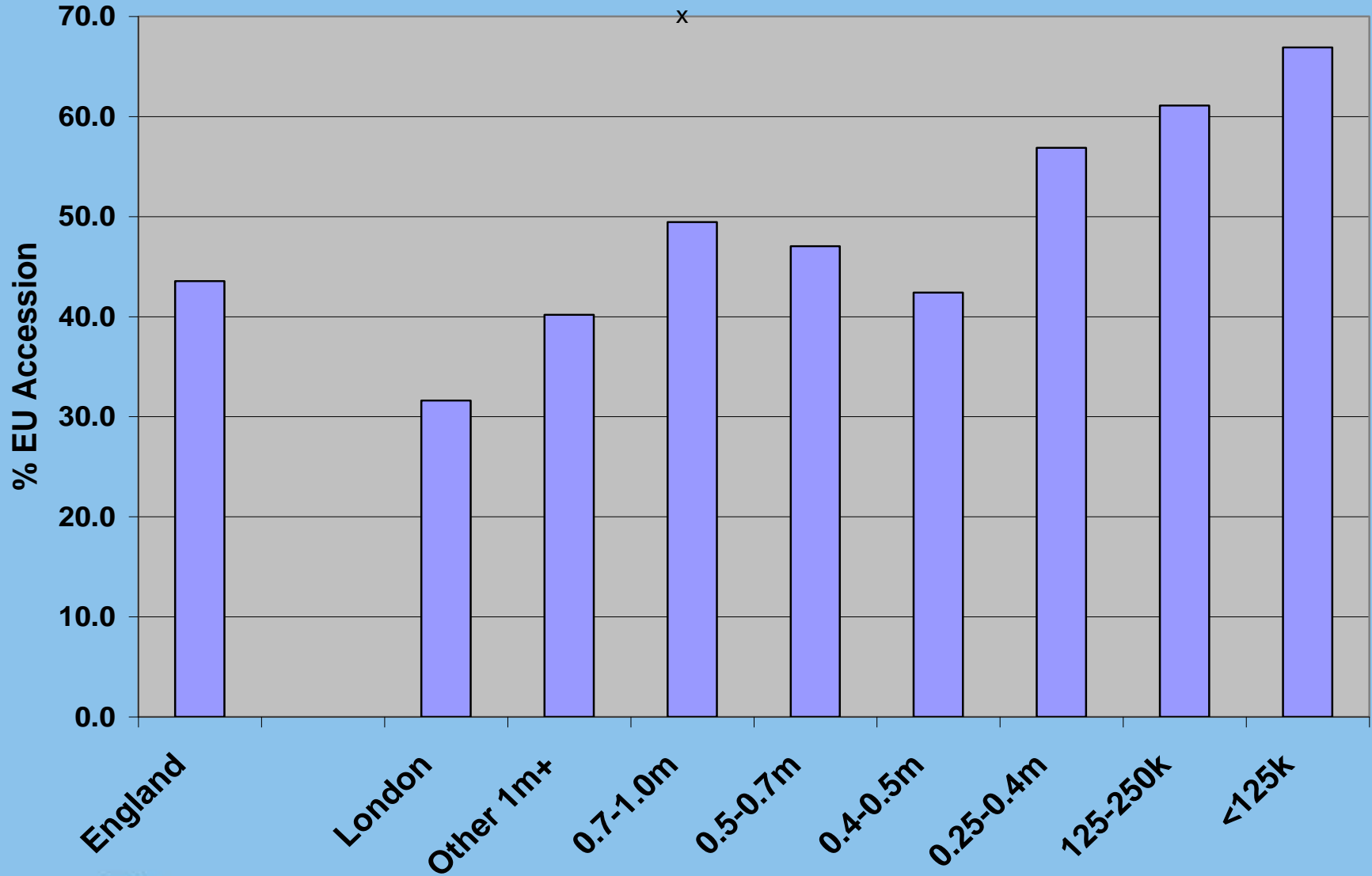
NB. Bold = overrepresentation cf 2001 pop (ie. LQ>1.0)

TTWA size groups	<i>Total pop 2001</i>	Census EA	IPS 01-02	NINo 05-06 All frgn	NINo 07-08 All frgn	NINo 05-06 EU Acc	NINo 07-08 EU Acc
London	<b>15.3</b>	<b>35.9</b>	<b>36.6</b>	<b>36.5</b>	<b>38.7</b>	<b>23.3</b>	<b>28.3</b>
Other 1m+	<b>10.1</b>	<b>11.6</b>	<b>16.0</b>	<b>13.1</b>	<b>12.6</b>	<b>12.5</b>	<b>11.6</b>
0.7-1m	<b>9.8</b>	5.4	6.2	6.6	6.2	7.2	7.1
0.5-0.7m	<b>14.2</b>	12.1	11.1	10.9	10.6	12.4	11.4
0.4-0.5m	<b>9.2</b>	7.4	7.1	5.9	6.3	5.8	6.2
0.25-0.4m	<b>13.3</b>	8.4	7.7	9.7	9.3	13.1	12.2
125-250k	<b>16.3</b>	11.2	10.0	10.8	10.2	15.5	14.3
<125k	<b>11.7</b>	8.2	5.3	6.6	5.9	10.2	9.0
Total	<b>100.0</b>	100.0	100.0	100.0	100.0	100.0	100.0

# Location Quotients for NINo registrations, 2007-2008, by TTWA size group (England = 1.0)



# EU accession as % all foreign NI No registrations, 2007-08, by TTWA size group

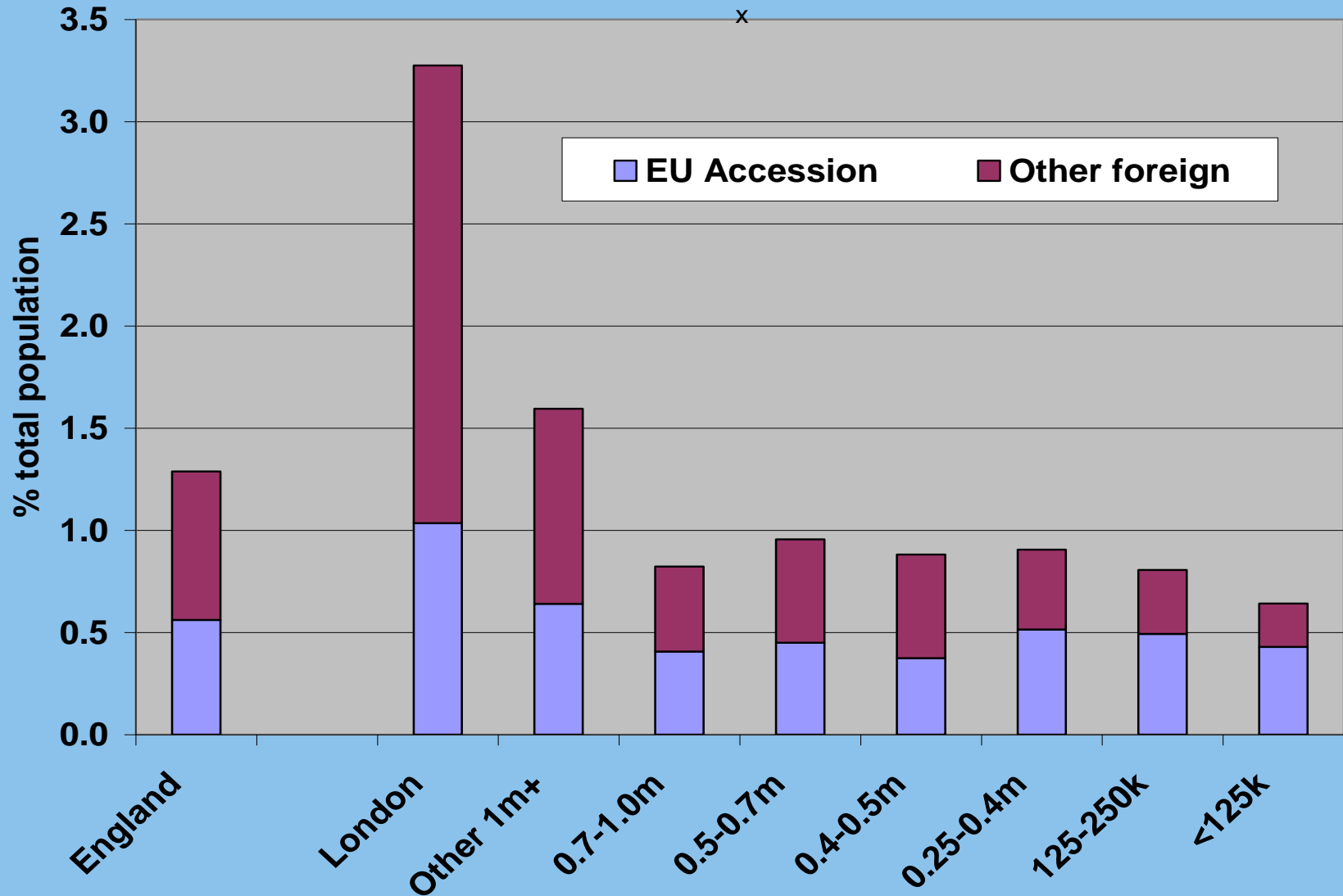


# EU Accession as % all foreign NINo registrations, 2007-2008, England

<b>%</b>	<b>Highest TTWAs</b>	<b>%</b>	<b>Lowest TTWAs</b>
<b>89.5</b>	<b>Hereford/Leominster</b>	<b>19.6</b>	<b>Richmond/Hawes &amp; Leyburn</b>
<b>89.4</b>	<b>Boston</b>	<b>31.0</b>	<b>Sunderland &amp; Durham</b>
<b>88.2</b>	<b>Spalding &amp; Holbeach</b>	<b>31.6</b>	<b>London</b>
<b>86.6</b>	<b>Wisbech</b>	<b>32.2</b>	<b>Guildford &amp; Aldershot</b>
<b>84.8</b>	<b>Goole &amp; Selby</b>	<b>33.1</b>	<b>Brighton</b>
<b>84.7</b>	<b>King's Lynn</b>	<b>33.1</b>	<b>Stoke/Leek</b>
<b>82.8</b>	<b>Skegness &amp; Mablethorpe etc</b>	<b>34.0</b>	<b>Worthing</b>
<b>80.5</b>	<b>Scunthorpe</b>	<b>34.8</b>	<b>Reading</b>
<b>79.9</b>	<b>Kettering &amp; Corby</b>	<b>35.8</b>	<b>Folkestone</b>
<b>79.5</b>	<b>Redruth &amp; Camborne etc</b>	<b>36.0</b>	<b>Loughborough</b>

Source: calculated from data from DWP Tabtool  
for best fit of LAs to the 1998 TTWAs

# Foreign NINo registrations, 2007-2008, as % of population, by TTWA size group



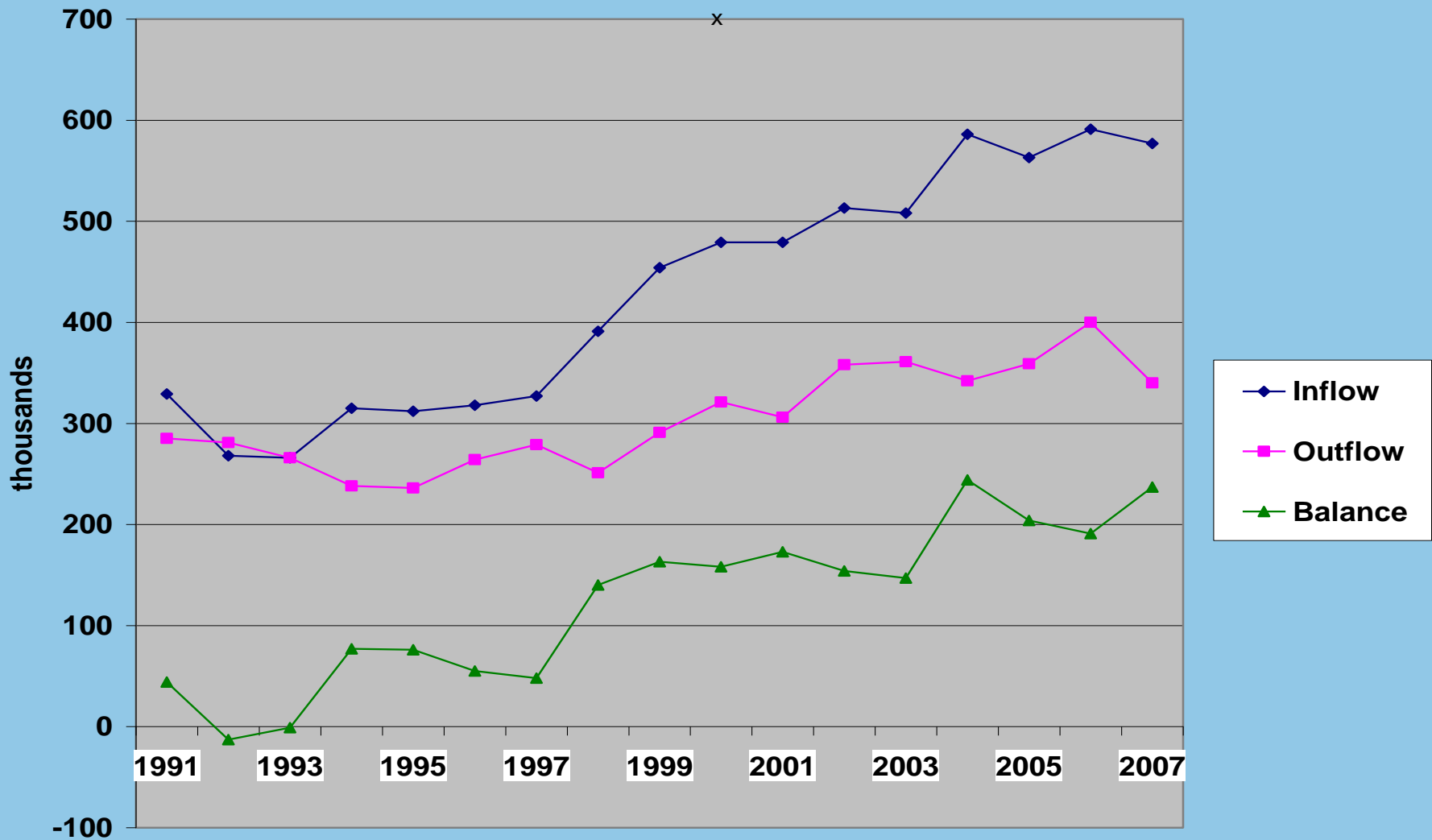
Source: calculated from data from ONS and DWP Tabtool for best fit of LAs to the 1998 TTWAs

# Highest TTWAs for foreign NINo registrations, 2007-08, as % of population, by EU Accession and Other foreign

<b>%</b>	<b>Highest TTWAs for EU Accession</b>	<b>%</b>	<b>Highest TTWAs for Other foreign</b>
<b>3.46</b>	<b>Boston</b>	<b>2.24</b>	<b>London</b>
<b>2.40</b>	<b>Peterborough</b>	<b>1.73</b>	<b>Slough &amp; Woking</b>
<b>1.85</b>	<b>Spalding &amp; Holbeach</b>	<b>1.12</b>	<b>Cambridge</b>
<b>1.66</b>	<b>Hereford/Leominster</b>	<b>0.99</b>	<b>Stoke/Leek</b>
<b>1.31</b>	<b>Wisbech</b>	<b>0.99</b>	<b>Oxford</b>
<b>1.14</b>	<b>Slough &amp; Woking</b>	<b>0.99</b>	<b>Reading</b>
<b>1.04</b>	<b>London</b>	<b>0.92</b>	<b>Milton Keynes</b>
<b>1.02</b>	<b>Rugby</b>	<b>0.85</b>	<b>Swindon</b>
<b>1.00</b>	<b>Luton</b>	<b>0.85</b>	<b>Brighton</b>
<b>0.99</b>	<b>Kettering &amp; Corby</b>	<b>0.82</b>	<b>Bournemouth</b>

Source: calculated from data from DWP Tabtool  
for best fit of LAs to the 1998 TTWAs

# International migration, UK, 1991-2007, thousands



Source: Revised estimates from ONS

# Highest and Lowest LAs for international immigrants, 2006-2007, per 1000 residents (England & Wales = 10.2)

<b>Per 1000</b>	<b>Highest LAs</b>	<b>Per 1000</b>	<b>Lowest LAs</b>
59.1	Cambridge	1.0	Easington
54.3	Westminster	1.0	South Ribble
52.3	Kensington & Chelsea	1.1	Cannock Chase
48.0	Camden	1.1	Rossendale
45.6	Oxford	1.1	Neath Port Talbot
36.5	Forest Heath	1.1	Wear Valley
36.4	Tower Hamlets	1.1	Sedgefield
36.2	City of London	1.1	Torfaen
35.1	Hammersmith & Fulham	1.2	Staffordshire Moorlands
34.3	Newham	1.2	Caerphilly

# Short-term migration: the issues

- There are problems with the migration data used above:
  - (1) The official data on international migration inflows and outflows refer to people staying at least 12 months
  - (2) The NINo data are for new registrations, with no data on de-registering, so give no info about stock or turnover
- The Workers Registration Scheme collects info on intended length of stay: for year ending Sept 2008, 62% <3 months, 5% 3-<12 months, 11% 1+ years, 23% don't know

BUT (1) Intention only; (2) Only for A8 from C&E Europe

- International Passenger Survey asks people entering and leaving UK about intended and actual stay respectively
- This info is used in calculating components of change for 'residents' estimates: 'visitor switchers', 'migrant switchers'

# Latest info on short-term migrants

- Own calculations indicate 2.72m 'visitors' (intended stay <12 months) to England & Wales in 2004
- According to ONS, 62.5% of such 'visits' in 2004-05 were for <1 month, leaving 1.02m 'short-term migrants' (staying at least 1 month but less than one year)
- The mean length of stay for people leaving after stay of this length was 2.6 months
- This info allows ONS to calculate the Long Term Migration Equivalent of these short-term migrants to E&W
- The average stock of short-term migrants in E&W in 2004-05 was 205k – work underway on distributing these by LA
- Calculations of the reverse process show that short-term emigrants averaged 416k – again no geography as yet

# Demographic impacts: some answers (1)

- International migration is still very difficult to study because of poor data and variety of sources/definitions
- Net immigration to UK (official definition: staying 1yr+) has risen in several bursts from zero in 1993
- By 2001-2006 migration was responsible for almost two-thirds of UK population growth (despite rise in births)
- International migration's impact on population growth is higher in South & East of England than in North & West
- It also exhibits a strong urban/rural gradient, though somewhat less recently (nb.- still the 1-year definition)
- NINo registrations by EU Accession members (all lengths of stay) show a less steep urban/rural gradient

## Demographic impacts: some answers (2)

- Migration's impacts partly depend on gross inflows, turnover and length of stay
- Gross inflow rate of 'long-term migrants' for E&W LAs ranged from 5.9% of population to 0.1% in 2006-07
- ONS estimates 1.02m 'short-term migrants' in 2004-05, with a mean length of completed stay of 2.6 months
- The impact of these short-term migrants on average population is put at 205k, but no info on geography yet
- Impacts for local housing and service providers depends on length of stay, reasons for move, characteristics including country of origin, whether move again in UK
- But primary need is to distinguish (1) long-term impacts on usually resident population; from (2) turnover of short-term labour migrants

# Demographic Impacts of Migration to the UK: A Geographical Perspective

Tony Champion

[tony.champion@ncl.ac.uk](mailto:tony.champion@ncl.ac.uk)

