



**Institute for Public Policy Research**

Challenging ideas for a fairer future

[WWW.IPPR.ORG](http://WWW.IPPR.ORG)

# **The Economic Profile of Britain's Migrant Communities**

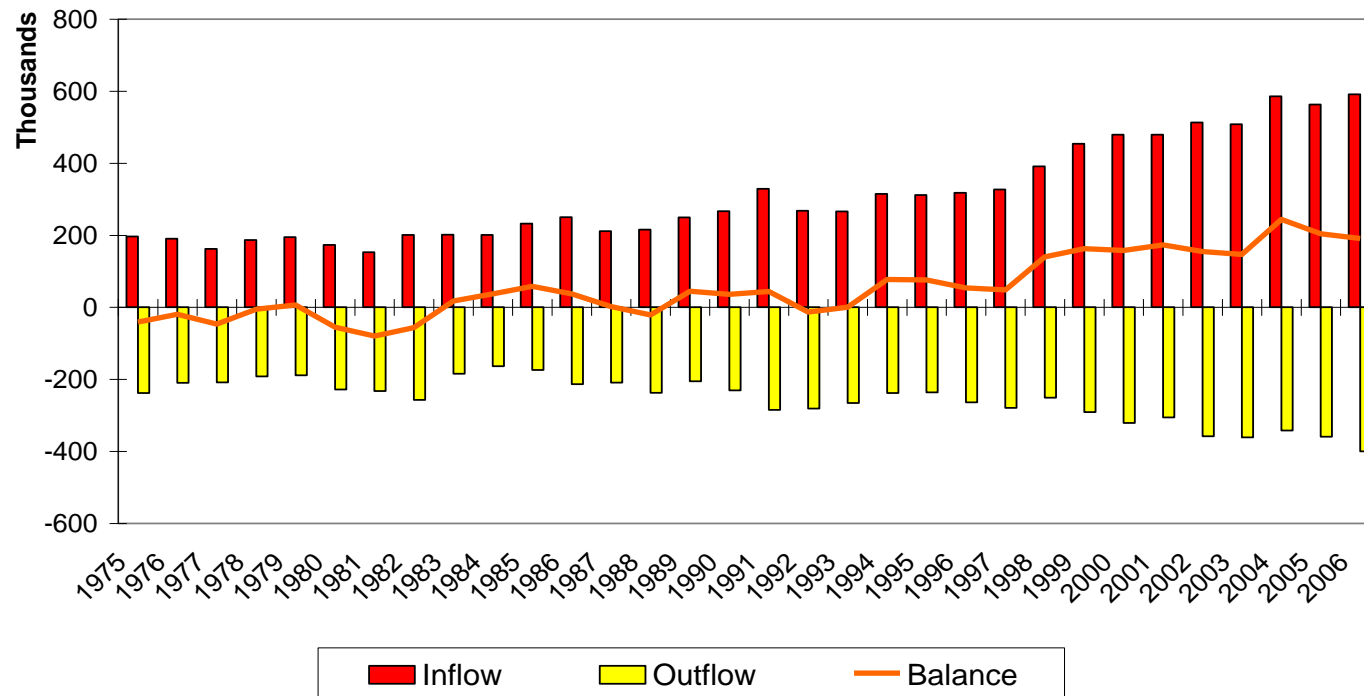
**Jill Rutter, Senior Research Fellow, Migration, Equalities and Citizenship Team, ippr**



# Institute for Public Policy Research

Challenging ideas for a fairer future

WWW.IPPR.ORG



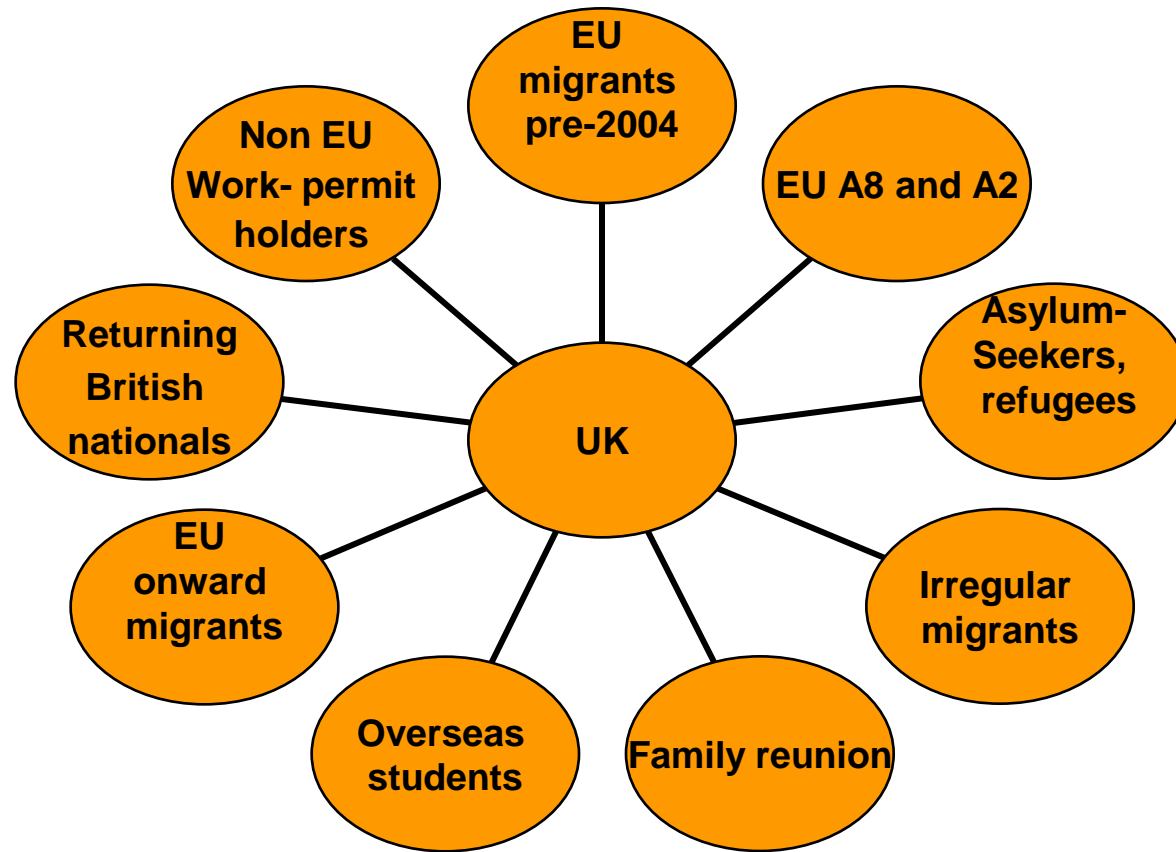
Source: International Passenger Survey and Total International Migration, Office for National Statistics



# Institute for Public Policy Research

Challenging ideas for a fairer future

WWW.IPPR.ORG





## UK data

- **EU labour migrants pre-2004, largest groups are Irish**
- **About 550,000 EU labour migrants from new accession countries**
- **86,300 work permit holders in 2007**
- **42,200 spouses in 2007**
- **346,000 overseas students (non EEA) in 2006**
- **23,430 asylum applications in 2007, top countries are Iran, Iraq, Afghanistan, China, Eritrea and Zimbabwe.**
- **Irregular migrants: clandestine entrants, asylum and visa overstayers – government estimate of about 500,000**
- **‘Returnees’ and ancestry visas – 5.5 million British passport holders live abroad.**

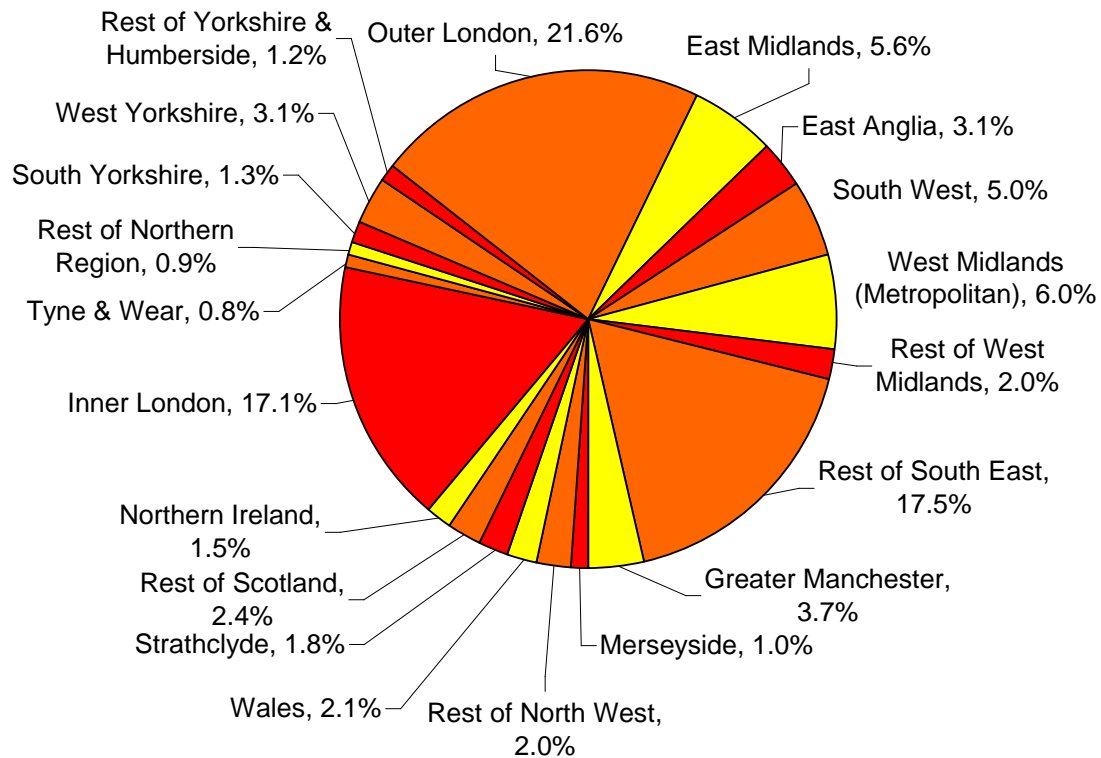


- **People do not always fit into neat externally ascribed categories. People can change immigration statuses. Motivations for migration are complex. There is an asylum-migration nexus, and a worker-student nexus.**
- **Some groups of migrants are more visible or more problematised than others.**
- **Need to acknowledge super-mobility: greater return, onward and short term migration**
- **Super-diversity. In the past, UK migrant and minority populations comprised a small number of large communities. Now many different communities live side-by-side, different not only in their national origin, but also residency status, ethnicity, language, household composition, employment experiences, educational qualifications, religious and political affiliations.**
- **Migration to rural areas**



- 10.7 per cent of UK population is born abroad and 9.3 per cent of East of England population is born abroad.
- Main foreign born populations in the East of England are Poland-born (1), India (2), Ireland (3), Pakistan (4), USA (5), Germany (6) S Africa (7), Zimbabwe (8) Italy (9), Australia (10), Nigeria (11) and Slovakia (12).

**Figure X. Foreign Born by place of residence, 2007**





## **Diverse prior education**

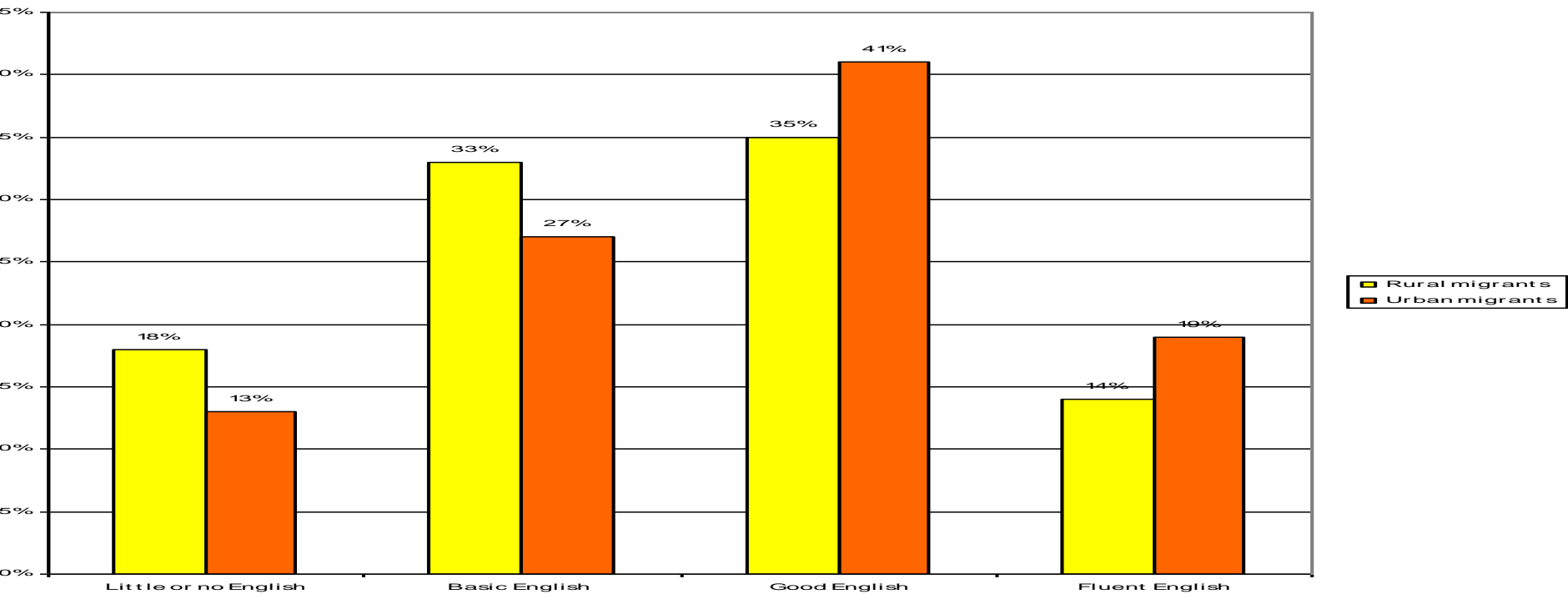
### **Qualifications by Country of Birth**

- **UK 36.2% higher level qualifications.**
- **Somalia 11.8% higher level**
- **Poland 19% higher level**
- **USA 58.8% higher level**
- **Nigeria 53.5% higher level**

**But polarised and gendered qualifications profile**



## Diverse English language competencies





## **Diverse labour market experiences**

### **Economic activity**

**Canada 85% employed, 2% unemployed and 13% inactive**

**UK 78% employed, 4% unemployed and 18% inactive**

**Nigeria 76% employed, 7% unemployed and 17% inactive**

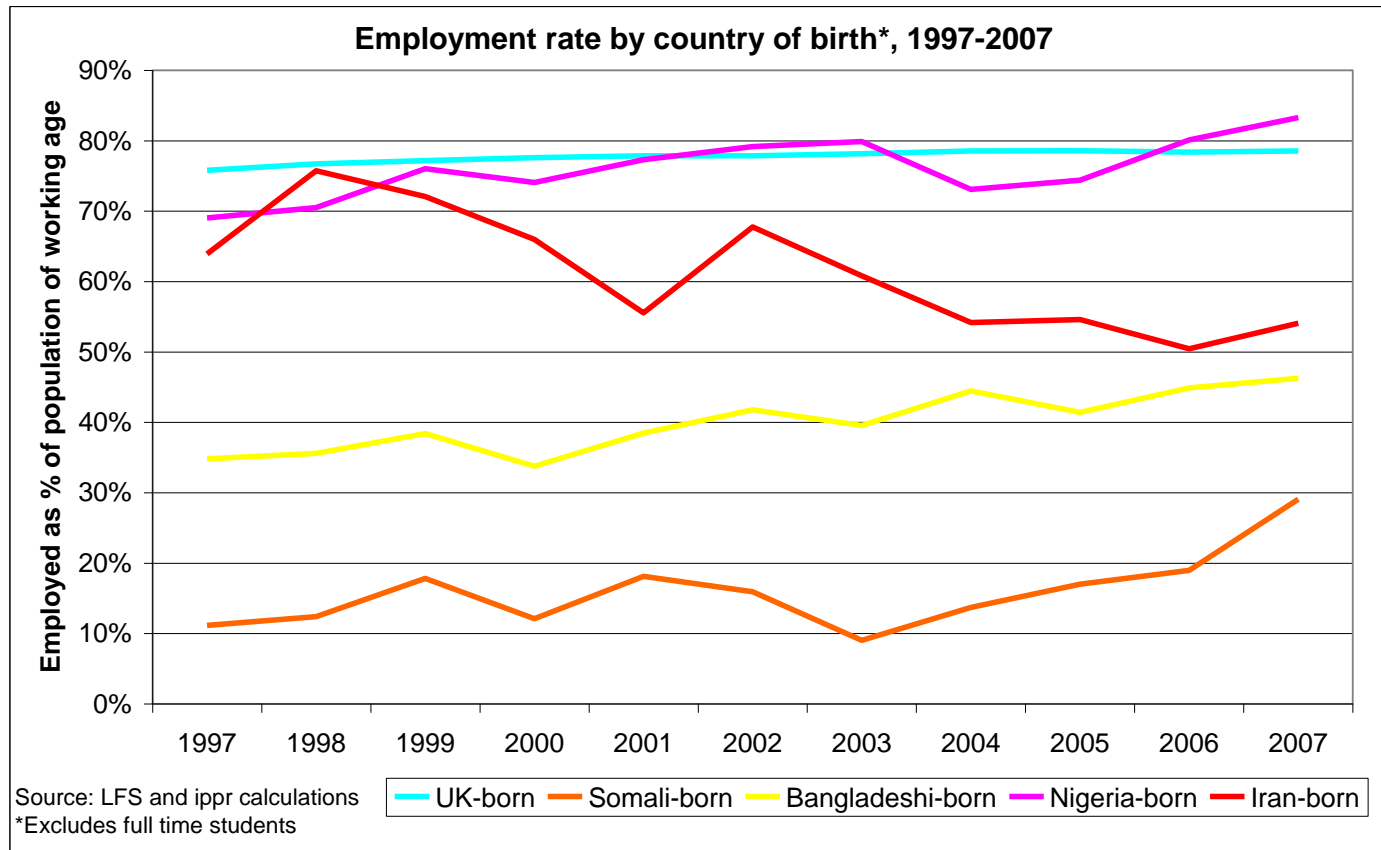
**Somalia 19% employed, 10% unemployed and 71% inactive.**



# Institute for Public Policy Research

Challenging ideas for a fairer future

WWW.IPPR.ORG





## Occupational segregation

**High proportion of non-A8 migrants (49%) work in higher skilled occupations**

**High proportion of A8 migrants (38%) work in elementary occupations**

**Occupational segregation: health and social care, banking and finance, hotel and catering employ high proportions of migrants.**

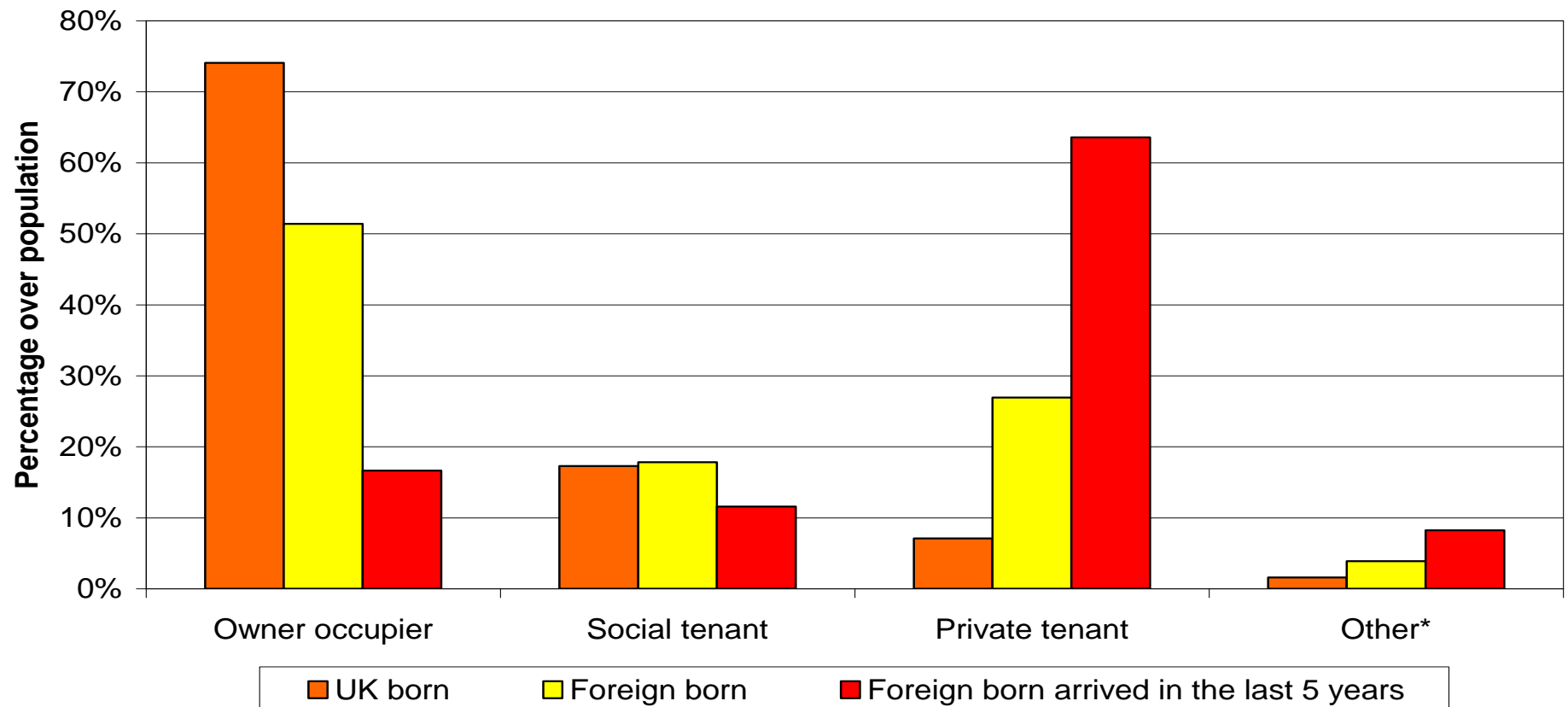


## Average gross hourly pay from main job of economically active population aged 16-59/64 by country of birth, 2005/06

- USA - £17.10
- Australia - £15.20
- Uganda - £13.40
- Kenya - £12.50
- Italy - £11.90
- Jamaica - £11.60
- **UK - £11.10**
- Nigeria - £10.80
- Ghana - £9.40
- Bangladesh - £9.30
- Turkey - £8.20
- Somalia - £7.90
- Poland - £7.30



## Housing tenure distribution by country of birth



Source: LFS 2006Q4-2007Q3

\* Includes rent relative of household member or related to work



Are the children of migrants securing better educational and economic outcomes than their parents?



## **GCSE results 2003 mean percentage difference from English mean**

**Chinese + 11%**

**Sri Lankan +8%**

**Iranian +5%**

**Nigerian +1.5%**

**White UK +1%**

**Italian -1%**

**Pakistani -11.3%**

**Somali -22.8%**

**Portuguese -32.8%**



## **Public policy problems**

- **Language of public discourses stokes tensions and constructs social problems, while rendering others invisible**
- **Disaggregating 'migrant' and recognising heterogeneity**
- **Finding out why some groups are successful and others not**
- **In work poverty among some groups**
- **High levels of unemployment among refugee groups such as the Somalis**
- **The 1.5 and second generation**
- **Irregular migration**



## The way forward?

- **A more flexible welfare-to-work (WTW) system for all**
- **Tackling in-work poverty – Living Wage and enforcement of NMW**
- **Publicity and training to ensure higher uptake of in work benefits for those on low incomes**
- **Positive procurement regimes, fair wage label?**
- **Regularisation**
- **More innovation in ESOL provision to meet needs of working migrants and those with little prior education**
- **More funding for school-based language teaching**
- **Review of 14-19 qualifications, single diploma.**