

# TERRITORIALIZATION OF THE STATE OF RONDÔNIA AND THE IMPACTS OF ZONING SOCIOECONÔMICO-ECOLOGICAL FOR THE DEVELOPMENT OF REGION GUAJARÁ-MIRIM

Oleides Francisca de Oliveira<sup>1</sup>  
Heleniza Avila Campos<sup>2</sup>  
Gleimiria Batista da Costa<sup>3</sup>  
Janete Stoffel<sup>4</sup>  
George Queiroga Estrela<sup>5</sup>  
Maray Rodrigues<sup>6</sup>

## ABSTRACT

The purpose of this study is to analyze the territorial order of the State of Rondônia, in the dimension that contemplates an imposition of the Plan of Agricultural and Forest of Rondônia - PLANAFLORO, the zoning social-economic and ecological – ZSEE/RO, based on dates collected since the 1<sup>st</sup> approximation that the state was divided into six zones and the 2<sup>nd</sup> approximation and conclusion of zoning, which covers three areas and nine sub-areas, in evaluating the impacts of ZSEE for the development of the region Guajará-Mirim/RO, the characteristics and specific environmental, institutional areas, which consist of units of conservation and restricted use of controlled, prescribed by law imposed by the union, state and municipality. The municipality has a geographic area of 25.257 km<sup>2</sup>, corresponds 21.85% of the state surface, is limited in developing economic activities, therefore by means of the instituted laws this area must more than preserve 90% of its territory in natural forests.

**KEY-WORDS:** territorial order, socioeconomic zoning - ecological and development.

## 1 INTRODUCTION

The scientific community and organizations related to research, regionalization, have developed concepts of territory in a broader analysis including geography, economics, politics and culture in order to examine the territory as multidimensionality. So we can say that is related to territorial aspects of the development process in continuous change.

The state of Rondonia is located in the Amazon region in northern Brazil, this has a low level of integration and land use, urban centers are far apart and surrounded by large empty spaces, transport networks are insufficient, but the State Rondonia has economic potential and diversity of natural resources and from the development policy of the State, the government in the decade from 1970 to 1980 created the occupation projects for exploitation of natural resources and land use.

The policy of regionalization of the city of Guajará-Mirim/RO is linked to the development policy of the state and the Socio-Economic-Ecological Zoning (ZSEE) this deployed by the federal government divided the state into zones for different uses, focusing on the exploitation of forest resources, ecological potential and trends of skills, mainly uses in order to discipline the axis of the BR-364, densely populated and highly degraded, whose

---

1,3 e 4 – Doutorandas em Desenvolvimento Regional da Universidade de Santa Cruz – UNISC/RS  
2 – Doutora em Ciências Geográficas pela Universidade Federal do Rio de Janeiro – UFRJ/RJ  
5 – Doutorando em Educação pela Universidade Estadual Paulista – SP  
6 – Mestre em Administração pela Universidade Federal de Rondônia – UNIR/RO

problems go beyond the relevant environmental issue, especially the social order, resulting from urban growth, which given in an uncontrolled manner (MAPA, 1998). The ZSEE / RO was one of the requirements of the Plan of Agricultural and Forest of Rondonia - PLANAFLORO, which foresaw the need to promote the state of occupation of the state criteria more sustainable. This goal was to make corrections Development Program in the Northwest region of Brazil - POLONOROESTE created by the federal government, which aimed to support the socio-economic migrants from other states especially South and Southeast, encouraged by the government and people develop north of the country, through projects of road paving and infrastructure that facilitate the flow of production. For disposal of this production was approved by the federal government for paving the BR-364, funded by International Bank - IBRD, as levy for this funding that the State would have its ecological and economical.

The municipality of Guajará-Mirim with a geographical area of 25,257 km<sup>2</sup> represents 21.85% of the surface state, located outside the axis of the BR-364 - highway that connects the state of Rondônia to other centers in the country - located in zone 3 the ZSEE / RO, where more than 92% of its territory are protected areas for environmental preservation and Indian reservation (INPE, 2007). Economically the city is stagnant, producing what and for whom a quantity of sustainability of a region. The development policy of the state with ZSEE not brought to the council the advantages that favor those who are located in the axis of the BR-364, and not forgetting even without the high percentage of preservation.

## **2 TERRITORIALIZATION AND / OR PLANNING**

The occupation of a particular physical space by humans interact with the environment triggers the process of planning in a region.

There are various concepts of territory, they guide the discussion of policies related to territorial aspects of the development process in continuous change. Territorialization can be described as a suitable space, Raffestin, 1993, which also incorporates other dimensions of understanding and analysis, such as identity, cultural and symbolic (Haesbaert, 2005).

This base is composed of pathways of penetration and natural barriers, the possible articulations and differentiations imposed by the physical characteristics, and the attractions and repulsions caused by them. Man prints the physical basis on which it stands, certain settings that lead to specific patterns of occupation and land use. And such an effort, coming from a process of interaction between man (organized in society) and nature, constitutes the essence of the development process (Wilson, 2009).

Zoning is an instrument that has as main objective the division of a geographical unit in homogeneous areas in order to order the occupation of that sovereign territory and state public policy and governmental actions commensurate (ZSEE, 2006).

In 1990, the Federal Government embraces the idea of Ecological-Economic Zoning, creating in September of that year the "Coordinating Committee of National Economic-Ecological Zoning", being assigned to the Strategic Affairs Secretariat of the Presidency SAE / PR as a coordinating entity the work of national zoning when it defined the legal Amazon priority area, comprised of nine states of the North: Acre, Rondonia, Amapa, Amazon, the western half of Maranhao, Mato Grosso, Pará, Roraima and Tocantins, to conclude the zoning

by the end of 2009. The state of Rondônia was an early conclusion of their ZSEE / RO on 06 June 2000. (SEPLAN, 2006).

One of the main tools of spatial planning is the socioeconomic-ecological zoning, which aims to reconcile economic development and environmental preservation in a systematic structure of occupation. With this object was created in 1990 by the government of Rondonia PLANAFLORO - Plan of Agricultural and Forest of Rondonia, which had the zoning requirement for socio-economic and ecological state of Rondonia.

### **3 THE TERRITORIAL ORGANIZATION OF THE STATE OF RONDONIA**

#### **3.1 Encouragement of Migration for Development**

With the encouragement of migration to Rondonia state in the 1970s, when the Federal Government, has stimulated the rural surplus population of the states of South and Southeast, a pioneer of decent epics experienced by explorers three centuries ago, came from states where the environment had been largely, degraded or depleted by lack exactly that kind of consciousness.

In 1988, the Federal Government has launched the "Our Nature" as a response to expressions of concern, especially internationally, as the accelerated deforestation in the Northern Region. The program was aimed at planning, concept on which to structure a systematic occupation, able to reconcile economic development and environmental preservation. That same year the government of Rondônia, attentive to environmental issues and the objectives and targets for the development of the state, started in 1986 by the Development Program of the Northwest Region of Brazil - POLONOROESTE embodies the idea of spatial planning, in a perspective of sustainability in the long term. Following on the State Government, by 1986 began a process for corrections POLONOROESTE, presents a program called PLANAFLORO - Plan of Agricultural and Forest of Rondonia where, among other goals and targets had priority for the Socio-Zoning Economic-Ecological (ZSEE, 2006).

The PLANAFLORO originated from the identification of problems arising from the intense process of migration that has affected the state, especially in the 80s. The project had a loan agreement signed on September 19, 1992, between the International Bank for Reconstruction and Development - IBRD, and the Federative Republic of Brazil, for execution by the state of Rondonia. The main objective of the plan is the implementation of actions that provided the rational utilization of natural resources in order to encourage sustainable development in Rondonia, with the scope, components that guided the planning of the defendants. These actions are based on the Zoning socio-economic-ecological, still in its first approach, which defined the rationalization of the occupation of sovereign territory of the state, allowing the best use of their natural resources in line with the fertility of the soil, and other factors of ecological and socio-economic status (LIMA, 1998 and ITERON, 1997).

#### **3.2 The Division of Zoning Socio-Economic and Ecological Rondônia**

The disorderly and accelerated the territory of Rondonia has brought to its rulers and administrators concern organize and define actions for their development. Establishing the basis of 1st Approach Zoning Socio-Economic-Ecological been effected on the scale of 1:1,000,000 divided into 06 (six) areas shown in Table 1.

This approximation Zoning was established in June 14, 1988, by State Decree No. 3782.

**Table 1 - 1st approximation of Rondonia State Socio-Economic-Ecological Zoning**

Zone	Destination	Zone	Area (ha)
1	Intensification of Agricultural Exploitation	Comprises mainly the axis of the BR-364, which concentrates the colonization projects. It consists of a combination of the best soils of the state and area of moderate fertility which support some forms of sustainable cultivation through agroforestry consortia	6,195,000
2	Smallholders in collectivity	Formed on the areas of soils with moderate fertility and low just as some communities have developed without the support of official colonization, predominantly agricultural activity and occurrence of primary and secondary forest.	3,015,000
3	Waterfront	Located on the shaft of the Madeira-Mamore and Machado-Guaporé where people practice traditional floodplain agriculture, fishing activity and non-timber forest extraction.	589,000
4	Extractive	Nominated for the development of the activity of non-timber vegetal extraction, predominantly native rubber, with or without the nuts and other forest species. Composed of fragile environments, where the economic use must not use change of ecosystems.	3,500,000
5	Forest Management	Forest Composed by slightly fragile ecosystems characterized by dense rain forests and open, with significant potential for timber suitable for the use of wood species on a commercial scale.	3,601,000
6	Conservation and Preservation	Comprising zone fragile ecosystem, unique or characteristic, which requires appropriate environmental management, to ensure the maintenance of vegetation and ecological balance. Zone are included in the indigenous areas in special situation.	7.404.000

**Source:** SEPLAN/90.

The design methodology presented in Table 1 guided the 1st Approach Zoning relied on recognition of territorial occupation and evidence of soil and climatic constraints geofitoecológicos and the "Environmental Systems" occupation.

### 3.3 Rondonia Social-Economic Ecological Zoning Definition

In 1995 the state of Rondonia starts a new diagnosis of socio-economic-environmental transmission of reports together with the IBRD on the need to analyze the physical and biotic, proposing other proposed technical approach of the 2nd Zoning Socio-Economic-Ecological.

A summary of work for the 2nd approximation of Zoning Socioeconomic Ecological state of Rondônia was developed by the Consortium Tecnosolo-DHV Eptis, was meant to accomplish, through the collection and integration of primary information and secondary diagnosis of the social environmental-economic-state, for, then, propose a new zoning that reflects the results of diagnosis.

To achieve this goal was a survey of situational and physical environment and biotic subdivisions contained in Frame 1.

### Frame 1: Situational survey

The physical environment (life basis)	Geology	the source area, its mineral
	Geomorphological	territory characteristics
	Climate	territory modeling
	Hydrology	The amount of water and its purity
	Soil	where it grows human action
	Hydrogeology	water that is not seen
Biota (life)	Vegetation cover	forests, their products and services
	Wildlife	animal species, which are inhabited, their relationships with men
Anthropic (man)	Demographics	population dynamics
	Productive sectors	land products, industries, trade, services
	Land use	what is made to the earth
	Land ownership	Land distribution
	economic infrastructure	roads, energy, communications
	social infrastructure	education, health, quality of life
Legal and institutional	laws , institutions and zoning	

**Source:** Compiled by the author - data published by SEPLAN. 2006.

To accomplish the ZSEE, according to art. 9, item II of Law 6.938 of August 31, 1981, of which only recognize the EEZ state "for purposes of uniformity and compliance with the federal public policies" since they have been approved by State Commissions and the EEZ by the Assemblies laws. Administrators and technicians, in close contact with the company introduced the necessary amendments to the zoning law represents the consensus of the new boundaries and characteristics of the inhabitants of Rondonia. To diagnose the socio-economic-environmental new methodology was implemented:

- A survey of situational-known pieces;
- diagnosis - integrate the parts to see the whole;
- the zoning proposal - to reorder the whole;
- discussion with the company - the participation of all;
- the zoning law - the obligation of all men and
- monitoring.

Several workshops and public hearings were held, including the following counties: Guajará-Mirim, Machadinho, Nova Mamore Buritis, Ji-Parana, Alta Floresta, Costa Marques, Cherry, San Miguel Guaporé, Pimenta Bueno and Porto Velho.

Completed the technical work, public hearings and a dozen workshops for discussion, the proposal was forwarded to the State Legislative Assembly and approved unanimously by its members. It establishes Complementary Law n ° 233, OF 06 JUNE 2000 establishing the areas of planning and direction of public policy of the state, ie, the Socio-Economic-Ecological Zoning of Rondonia State - ZSEE.

In this definition the zoning was divided into 03 zones and 09 sub-divided into those characterized by the degree of occupation, environmental vulnerability and ability to use it and the Conservation Units, comprised second is presented in table 2 below:

**Table 2: Rondonia Socio-Economic Zoning Composition**

Zones	Actions to be developed	Area-Km <sup>2</sup>	Area/total %	Tipo/Cobertura
<b>1</b>	varying degrees of occupation and environmental vulnerability, which characterize different Subzones	<b>120.310,48</b>	<b>50,45</b>	Consisting of areas for agriculture use, agroforestry and forestry
<b>Subzones 1</b>	<b>areas used primarily for agricultural exploitation, with varying degrees of occupation, environmental vulnerability and suitability of use set out below:</b>			
<b>1.1</b>	Infrastructure w / agricultural activities, agricultural and urban	61.417,35	25,75	Consisting of areas that have great potential social, concentrated the State most densely populated
<b>1.2</b>	Predominantly agricultural suitability and its regular, erosion vulnerability predominantly low to average.	30.664,01	12,86	Compound of areas with potential social average. Dominates the natural forest cover in accelerated occupation, with forest conversion
<b>1.3</b>	Potential forest, in nascent process of settlement and agricultural conversion of reduced natural vegetation cover	14.823,81	6,22%	Consisting of areas dominated by natural vegetation cover
<b>1.4</b>	Availability of infrastructure development with restrictions on the activities of conversion of natural vegetation cover	13.405,31	5,62	Consisting of areas that have infrastructure conducive to the holding of land
<b>Zone 2</b>	<b>Designed to conserve natural resources, which could use under sustainable management</b>	<b>34.834,42</b>	<b>14,60</b>	<b>Composed of special use areas</b>
<b>Subzone 2</b>	<b>areas for conservation of natural resources, available for use under sustainable management as defined below:</b>			
<b>2.1</b>	presents natural potential, especially the forest, in a satisfactory state of logging and non-wood, showing the opportunity cost of preservation between low and medium	25.653,37	10,75	Consisting of areas with insignificant conversion of forest land.
<b>2.2</b>	presents the low opportunity cost of forest preservation, facilitating the conservation of forest lands in their natural state	9.181,05	3,85	Consisting of areas that present occupation insignificant
<b>3</b>	<b>Comprising those protected usage restricted and controlled under the law</b>	<b>83.367,90</b>	<b>34,95</b>	<b>Consisting of institutional areas and introduced by the Union, states and municipalities</b>
<b>Subzone 3</b>	<b>Institutional areas, which consist of Conservation Units and restricted use of controlled, planned and instituted by the Federal, states and municipalities, as defined below:</b>			
	The use of environmental resources will follow the plans and guidelines specific to the units set up, such as State Forests Sustained Yield, National Forests,			Composed of areas consist Use Direct Conservation Units

<b>3.1</b>	Extractive Reserves and other categories established in the SNUC - National System of Units Conservation	18.081,29	7,58	
<b>3.2</b>	The use of the fields should be confined to the purposes of the units established, such as: Ecological Stations, Parks and Biological Reserves, Speleological Heritage, Heritage Private Natural Reserves and other categories established by SNUC.	23.752,50	9,96	Composed of areas which consist of the Indirect Use Conservation Unit
<b>3.3</b>	The use of natural resources is limited by law, where its use may be made only if authorized or granted by the Union	41.534,11	17,41	Composed of indigenous lands areas

**Source:** Compiled by the author, data published by SEPLAN, 2006

Table 2 show in more detail the composition of ZSEE / RO, and the procedure to be developed, the total area km<sup>2</sup> for each zone and therefore by its subdivisions, and the total percentage of land area of the state marking so the type of ecosystem composed of the coverage of each area.

We can also see in this table the area proposed in this study, identified as Zone 3 and their respective sub-zones. Its main feature consists of areas consisting of the Protected Areas and the Indirect Use of indigenous lands.

And approval by the formation of zones and sub-areas and the actions to be developed with their coverage areas identified and their specific division of the state was demarcated according to table No. 03 and Figure 1.

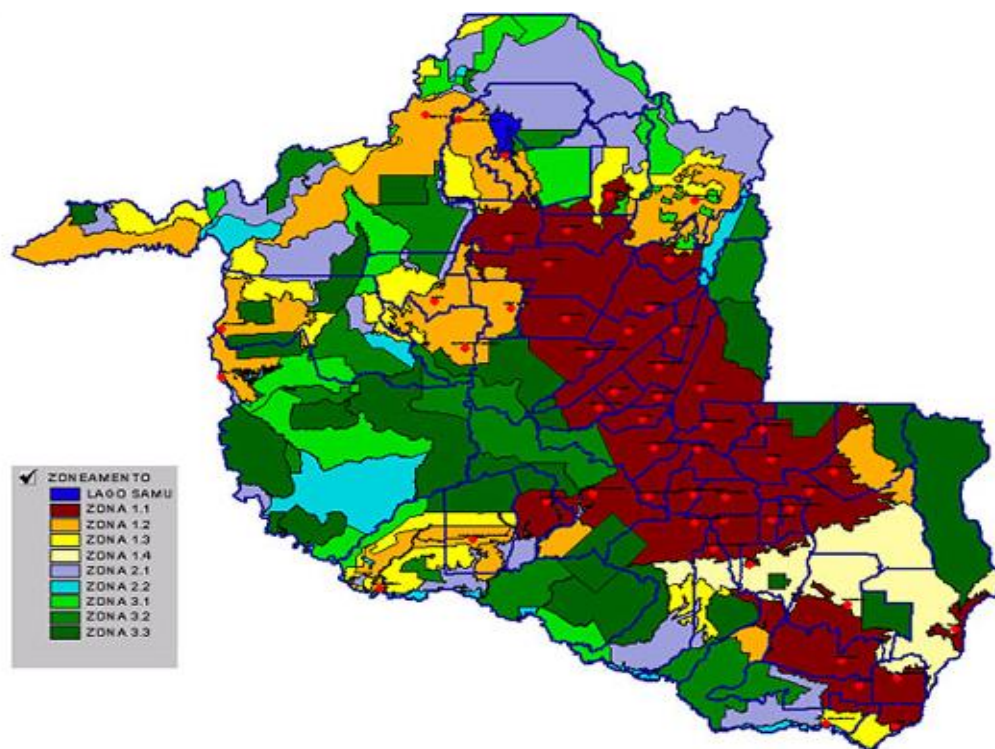
**Table 3: Zoning Summary**

Discrimination	Area		%		Preserved Area		Operating Area	
	( Ha )	( Km2 )	State Area	Reserve	(Ha)	State %	( Ha )	State %
<b>ZONA 1</b>								
Sub Zone 1.1	6.141.734,87	61.417,35	25,75	20	1.228.346,97	5,15	4.913.387,90	20,60
Sub Zone 1.2	3.066.401,19	30.664,01	12,86	40	1.226.560,47	5,14	1.839.840,71	7,72
Sub Zone 1.3	1.482.380,61	14.823,81	6,22	70	1.037.666,42	4,35	444.714,18	1,87
Sub Zone 1.4	1.340.531,12	13.405,31	5,62	80	1.072.424,90	4,50	268.106,22	1,12
<b>Composition by municipality Total: 45</b>	Cujubim, Machadinho do Oeste, Alto Paraíso, Vale do Anari, Rio Crespo, Ariquemes, Campo Novo de Rondônia, Monte Negro, Cacaullandia, Theobroma, Jarlú,, Vale do Paraíso, Governador Jorge Teixeira, Ouro Preto do Oeste, Nova União, Ji- Paraná, Mirante da Serra, Teixeiraópolis, Urupá, São Miguel do Guaporé, Alvorada do Oeste, Presidente Médici, Ministro Andreazza, Cacoal, Espigão do Oeste , Nova Brasilândia, Novo Horizonte, Castanheiras, Rolim de Moura, São Francisco do Guaporé, Seringueiras, Alta Floresta, Alto Alegre dos Parecis, Santa Luzia, São Felipe, Primavera de Rondônia, Pimenta Bueno, Vilhena, Parecis, Chupinguaia, Corumbiara, Cerejeiras, Colorado do Oeste, Pimenteiras do Oeste, Cabixi.							
<b>Sub Total Zone 1</b>	<b>12.031.047,79</b>	<b>120.310,48</b>	<b>50,45</b>	<b>-</b>	<b>4.564.998,77</b>	<b>19,14</b>	<b>7.466.049,02</b>	<b>31,31</b>
<b>ZONE 2</b>								
Sub Zone 2.1	2.565.336,50	25.653,37	10,75	-	-	-	-	-
Sub Zone 2.2	918.105,54	9.181,05	3,85	-	-	-	-	-

<b>Composition by municipality Total: 18</b>	Porto Velho, Candeias do Jamari, Cujubim, Machadinho do Oeste, Buritis, Itapuã do Oeste, Nova Mamoré, Guajará Mirim, São Miguel do Guaporé, Costa Marques, São Francisco do Guaporé, Seringueiras, Alta Floresta, Alto Alegre dos Parecis, Vilhena, Cerejeiras, Pimenteiras do Oeste, Cabixi.							
<b>Sub Total Zone 2</b>	<b>3.483.442,04</b>	<b>34.834,42</b>	<b>14,60</b>	<b>-</b>	<b>3.483.442,04</b>	<b>14,60</b>	<b>-</b>	<b>-</b>
<b>ZONE 3</b>								
Sub Zone 3.1	1.808.129,12	18.081,29	7,58	-	-	-	-	-
Sub Zone 3.2	2.375.250,04	23.752,50	9,96	-	-	-	-	-
Sub Zone 3.3	4.153.410,90	41.534,11	17,41	-	-	-	-	-
<b>Composition by municipality Total: 31</b>	Porto Velho, Candeias do Jamari, Itapuã do Oeste, Cujubim, Machadinho do Oeste, Vale do Anari, Buritis, Nova Mamoré, Campo Novo de Rondônia, Monte Negro, Jarú, Vale do Paraíso, Guajará Mirim, Governador Jorge Teixeira, Ouro Preto do Oeste, Ji-Paraná, Mirante da Serra, São Miguel do Guaporé, Alvorada do Oeste, Cacoal, Espigão do Oeste, Costa Marques, São Francisco do Guaporé, Seringueiras, Alta Floresta, Alto Alegre dos Parecis, Vilhena, Chupunguaia, Cerejeiras, Pimenteiras do Oeste, Parecis.							
<b>Sub Total Zone 3</b>	<b>8.336.790,07</b>	<b>83.367,90</b>	<b>34,95</b>	<b>-</b>	<b>8.336.790,07</b>	<b>34,95</b>	<b>-</b>	<b>-</b>
<b>General Total</b>	<b>23.851.279,90</b>	<b>238.512,80</b>	<b>100,00</b>	<b>-</b>	<b>16.385.230,88</b>	<b>68,69</b>	<b>7.466.049,02</b>	<b>31,31</b>

Fonte: SEPLAN – 28/12/2006 - ZSEE/RO – PLANAFLORO/2002.

As shown in Table 3 the distribution of land area and suitability for the city of Guajará-Mirim/RO found in zones 2 and 3 in which we can observe that 14.60% of zone 2 and 34.95% in Zone 3 are areas for preservation. The total area of the state is 238,512.80 km<sup>2</sup> and only in zone 1 was identified 31.31% for exploration. For better visualization of the zones and sub-division in Figure 1 we present the map of the 2nd approach ZSEE / RO.



**Picture 1: Approximation of the Second Rondônia Socio-economic-ecological state zoning.**  
Source: Map and SEPLAN / RO – 2006

According to Figure 1 which includes map of the 2nd approach ZSEE / RO, this facilitated the visualization of the zones and sub-divisions of the state of Rondonia. Zone 1 with colors: red (1.1), orange (1.2), yellow (1.3) and beige (1.4) are areas for exploration; Zone 2 with the gray and blue are areas for conservation of natural resources , capable of use under sustainable management; Area 3 colors Light green, natural green and dark green are special area for conservation.

To approve the Socio-Economic Ecological Zoning of Rondonia state various diagnoses were analyzed, and after completion of the legislation for approval were:

COMPLEMENTARY LAW N ° 233, OF 06 JUNE 2000 - Provides for the Socio-Economic-Ecological Zoning of Rondonia State - ZSEE.

COMPLEMENTARY LAW N ° 312, OF 06 MAY 2005, the State of Rondonia, establishing the Socioeconomic and Ecological Zoning - ZSEE - Changes the Complementary Law No. 233.

Decree No. 5875, FROM 15 AUGUST 2006 (DOU 16/08/2006) - Adopts Recommendation No. 003, February 22, 2006, the National Council on the Environment - CONAMA.

Article 1 is hereby adopted Recommendation No. 003, February 22, 2006, the National Council on the Environment - CONAMA, authorizing the reduction, for purposes of restoration, the area of legal reserve, up to fifty percent of the properties located in Zone 1 as defined in the Zoning Socio-Economic-Ecological State of Rondonia.

An analysis of the data that made up ZSEE / RO, is necessary a brief history of the city of Guajará-Mirim/RO and impacts on the trajectory of their development.

#### **4 THE REGION OF GUAJARÁ-MIRIM/RO**

The municipality is one of the oldest in the state. The beginning of his development was with the extraction of rubber and Brazil nuts, the Madeira Mamore Railway (EFMM). You are in an area of environmental conservation and indigenous reserves. Because of its limitations - the municipality is located to the greatest extent of preservation and indigenous reserves - for development of economic activities "modern" - technology, agropastoral production in large scale, industry - the city is now stalled in its demography, economic growth, intellectual and social.

The main access route to Guajará-Mirim is currently the BR-364 (BR responsibility of the federal government and linking to other states), but is off axis, ie not passing through the city, makes the BR-continuity 425, which in turn has a junction with the BR-421 linking the Mamore Ariquemes. The latter was built by loggers and causing conflict with the Indians, by circling areas of Indian reservation Uru-Eu-Wau-Wau (MARIALVA, 1999).

From the economic point of view, until the first half of the twentieth century there was no agricultural production. To meet this need of the population that originated during the cycles of rubber and which was already large, the federal government implemented the Colony Farmers IATA to meet the food production. It is the main productive sector of the city, only develop what they call the local crop white rice, beans, cassava, among other products of annual cycles. The agricultural surplus is marketed in the same town.

Beyond the traditional activity of family subsistence, the population develops based extractive activities in the forest, especially the extraction of the syringe (the Resex), along with fishing for survival.

According to the zoning rule, proposed in a regional development projects, the PLANAFLORO, in the 1990s among other objectives, proposed long-term government planning to fit a new order, which would take into consideration in ecological and environmental human.

With the region's specificities, we performed an assessment of the impacts of ZSEE to the development of the municipality.

## **5 ASSESSMENT OF THE IMPACTS OF THE REGION ZSEE**

In the 1st approach ZSEE state was divided into 06 (six) zones of different uses (FERREIRA, 1994). In this division of the county zoning Guajará-Mirim/RO, which has a geographical area of 25,257 square kilometers, equivalent to 21.85% of the surface state. Federal and State laws by the area of the municipality is located in zone 3 of ZSEE / RO, where more than 92% of its territory are protected areas for environmental preservation and Indian reservation (INPE, 2007).

The ZSEE is a tool that offers opportunities for economic growth and use of natural resources through environmental quality, which serves as basis for guiding sustainable development. Given the location of the municipality in zone 3, which economic growth could be developed in the region? Within this reality the planning, operation and management and self-sustained recovery, protection and preservation of environmental features that are different from other municipalities.

According to ZSEE, the State holds 51 conservation units of direct and indirect use of the various categories, as follows: 24 extractive reserves, 06 parks, 04 biological reserves, 04 ecological stations, 11 State Forests and 2 National Forests, and 22 indigenous areas, comprising 35% of the total area of Rondonia. These areas are, as institutional areas planned and instituted by the Federal, states and municipalities, all duly marked, except for two Indian reservations and are still being banned.

Considering the dimensions that covers the specifics of each region in which it was made in the socio-economic ecological zoning of the state, the municipality Guajará-Mirim in addition to having their lands demarcated in the preservation area and indigenous reserve, lies off the axis of the BR 364, that connects the state of Rondônia to the other member of the Country.

To evaluate impacts of ZSEE the development of the municipality, this has not brought the rewards in economic terms, the agricultural, livestock and technology of Rondonia, has a concentration of production along the highway BR 364 and cities without the limitations of the development Guajará-Mirim/RO the region.

## **6 CONCLUSION**

The planning requires a process to establish goals that meets the needs and regional realities. One such process is the socio-economic ecological zoning - ZSEE, which is targeted

as one of the guiding public policies necessary for the orderly development of actions to be undertaken by public and private sectors.

The ZEE, in short, is a technical planning and political differences, according to sustainability criteria, the absorption of conflicts, and temporality, which gives it a character of dynamic process that must be periodically reviewed and updated, capable of expedite the transition to the new pattern of development. The ZEE, therefore, is not an end in itself, not mere physical division, nor intended to create homogeneous zones and crystallized in static maps (EEZ, 2006).

As a result of this study was to evaluate the impacts of the development of the municipality ZSEE Guajará-Mirim, this shows that the development of "modern" in the region is limited to the use of restricted and controlled as provided by law and imposed by the union, state and municipalities, measures and standards of environmental protection and conservation.

The degree of occupancy, environmental vulnerability, affinities of use, and conservation units and indigenous reserves were defined by the zoning areas and subdivisions.

Soon he finds that, in obedience to the laws and environmental socioeconomic ecological zoning of the state, the region has no subsidies to develop like other municipalities.

For this, it is necessary to define development policies geared to the characteristics and specific needs.

From a theoretical viewpoint, the work contributed to better understanding of land use and its limitations, the restrictions on use and protection of natural resources.

In practice the council meets its economic development stagnated, with difficulties in maintaining an active and progressive society.

## 7 REFERENCES

DECRETO Nº 5.875, DE 15 DE AGOSTO DE 2006 (DOU de 16/08/2006) - Adota a Recomendação nº 003, de 22 de fevereiro de 2006, do Conselho Nacional do Meio Ambiente - CONAMA.

DECRETO Nº 4.297, DE 10 DE JULHO DE 2002 – substitui o D.O.U de 02.09.1981.

FERREIRA. IVP Madalena. **Percepção popular dos beneficiários do Planaflo**. Pesquisa aplica em Machadinho do Oeste, Ouro Preto e Guaiará-Mirim, Porto Velho. Agosto e Setembro/1994, PNUD-Consultor: Luiz Eduardo Baptista.

HAESBAERT, R. **Da Desterritorialização à Multiterritorialidade**. Anais do X Encontro de Geógrafos da América Latina. 2005. Universidade de São Paulo. Disponível em: [www.mazinger.sisib.uchile.cl](http://www.mazinger.sisib.uchile.cl). Acessado em 27.10.2009.

INPE - Instituto Nacional de Pesquisa Espaciais. Projeto PRODES Monitoramento da Floresta Amazônica Brasileira por Satélite/dados por municípios. 2007. Disponível em: [www.obt.inpe.br/prodes/index.html](http://www.obt.inpe.br/prodes/index.html). Acessado em 29.09.2009.

ITERON - Instituto de Terras e Colonização do Estado de Rondônia. MAPA do **Zoneamento Sócio-Econômico-Ecológico**: Primeira aproximação, I:1.000.000. Porto Velho. 1998

LEI COMPLEMENTAR Nº 312, DE 06 DE MAIO DE 2005, do Estado de Rondônia, que institui o Zoneamento Socioeconômico e Ecológico – ZSEE – Altera a Lei Complementar Nº 233.

LEI COMPLEMENTAR Nº 233, DE 06 DE JUNHO DE 2000 - Dispõe sobre o Zoneamento Socioeconômico-Ecológico do Estado de Rondônia – ZSEE.

LEI COMPLEMENTAR Nº 105, DE 30 DE DEZEMBRO DE 1993. Dispõe sobre a criação do Instituto de Terras e Colonização do Estado de Rondônia – ITERON.

LEI Nº 6.938, DE 31 DE AGOSTO DE 1981 – Dispõe sobre a Política Nacional do Meio Ambiente – CONAMA.

Lima, Abnael Machado de. Terras de Rondônia: Aspectos físicos e humanos do Estado de Rondônia. Porto Velho. Off-7 Edição Gráfica Ltda., 1997.

MARIALVA, Valber Gomes. **Diagnóstico Socioeconômico:** Programa de Emprego e Renda - Guajará-Mirim. SEBRAE/RO. 1999.

Programa de Ordenamento Territorial: **Princípios do Ordenamento Territorial.** Disponível em: [www.iterpa.pa.gov.br](http://www.iterpa.pa.gov.br). Acessado em 26.10.2009.

RAFFESTIN, Claude. **Por uma geografia do poder.** Tradução de Maria Cecília França. São Paulo: Ática, 1993.

SEPLAN – SECRETARIA DE PLANEJAMENTO - LEI COMPLEMENTAR Nº 233, DE 06 DE JUNHO DE 2000 - Dispõe sobre o **Zoneamento** Socioeconômico-Ecológico do Estado de **Rondônia** - ZSEE. 2006. Disponível em: [www.seplan.ro.gov.br/conteudo.asp](http://www.seplan.ro.gov.br/conteudo.asp). Acessado em 19.10.2009.

\_\_\_\_\_. **Zoneamento Socioeconômico: 2ª Aproximação do Zoneamento Sócio-econômico Ecológico** do estado de **Rondônia**. Dez. 2006. Síntese dos trabalhos desenvolvidos pelo Consórcio. Disponível em: [www.seplan.ro.gov.br/conteudo.asp](http://www.seplan.ro.gov.br/conteudo.asp). Acessado em 26.10.2009.

WILSON. T.F. **Ordenamento Territorial e Planejamento Estratégico do Desenvolvimento Local e Regional no Brasil: Frustração ou Sonho Possível?** Disponível em: [www.webartigos.com/.../Ordenamento-Territorial](http://www.webartigos.com/.../Ordenamento-Territorial). Acessado em 23.10.2009.

ZSEE. Considerações sobre o **Zoneamento Socioeconômico-Ecológico** do Estado de Rondônia. 2006. Disponível em: [www.iesavilhe.edu.br/oktiva.net/anexo/11527](http://www.iesavilhe.edu.br/oktiva.net/anexo/11527). Acessado em 24.10.2009.