

# **Economic Governance in an English City Region: Assessing the ‘Democratic Deficit’**

Andrew Johnston

Sheffield Business School,  
Sheffield Hallam University, UK



Sheffield  
Hallam University

# Initial Thoughts

- Local and regional economic development is about improving the living standards of the people living within that locale
- To what extent do the local population (electorate) influence the process?

# Background: Political

- Rise of city regions
  - Cf. The Northern Way, UK Sub-national review
  - New regionalism (cf. Lovering, 1999)
- Political developments
  - New government has pledged to devolve power to local people
- (Limited) Devolution of power from central government to local/regional actors (cf. Harrison, 2008)
  - Local Government Act 2000
  - Sustainable Communities Act 2007

# Background: Theoretical

- Urban entrepreneurship (cf. Harvey 1989)
- Public (sector) entrepreneurship
  - Autonomy of practitioners
  - Free up the public sector to take risks/develop innovative solutions
- Institutional thickness (cf. Amin and Thrift, 1994)
  - Leading regions have a rich institutional setup
- Democratic Theory
  - Role and control of public beaurcracy in a democratic state

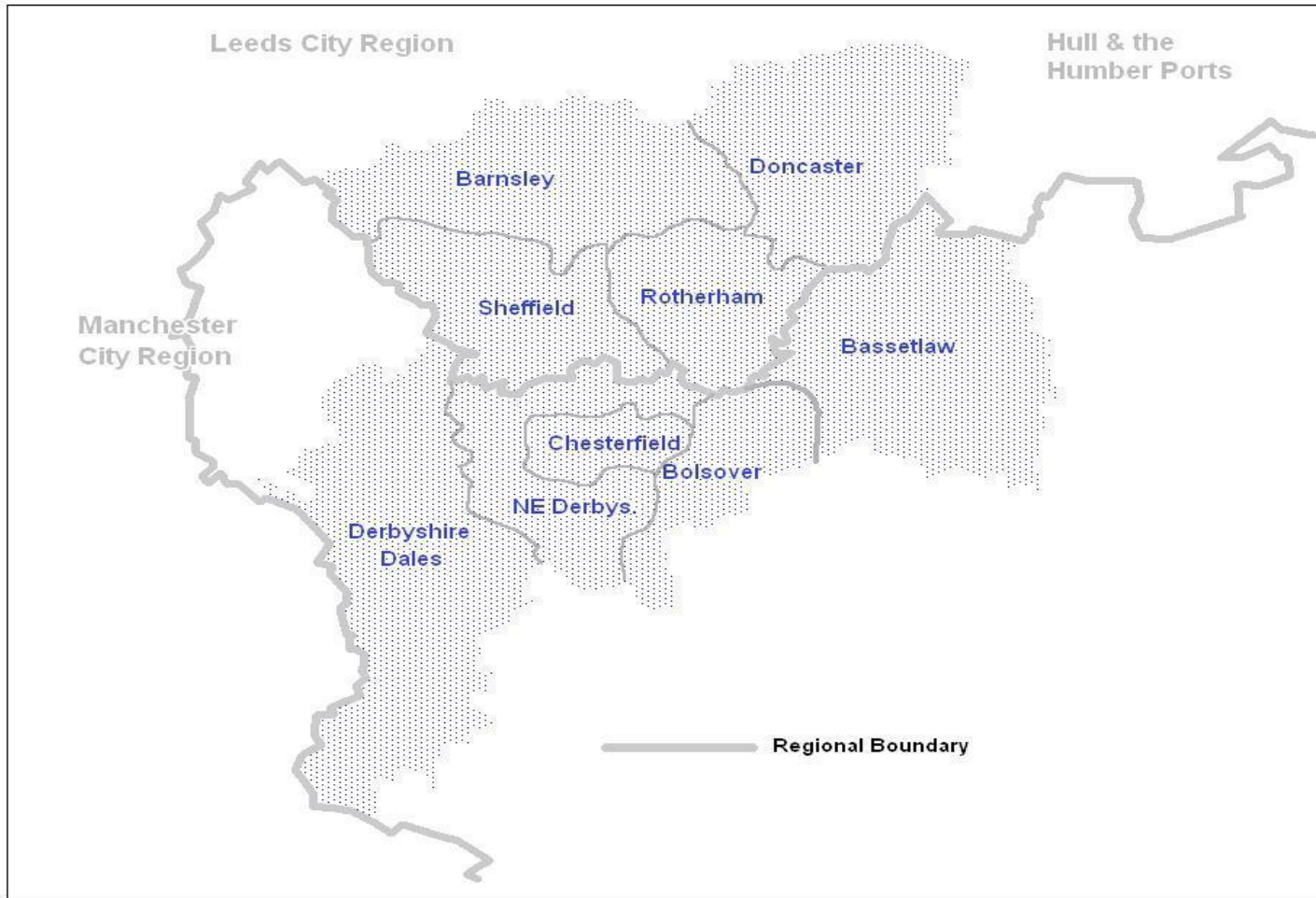
# Approach

- Focus on the Sheffield City Region
- Mapping the economic development process
- Qualitative state (cf. Pike and Tomaney, 2009)
  - Focus on identifying organisations and mapping roles
- Focus is on public agencies – i.e. Funded either fully or in part by local government, central government or EU.

# Public Bureaucracy in a Democratic State

- Levitan (1943): democratic state must be democratically administered with a “democratic philosophy permeating its administrative machinery”
- Redford (1969): ‘overhead democracy’ – public bureaucracies held accountable to elected officials
- deLeon and deLeon (2002): democratic public administration:
  - Knits together citizens and government
  - Builds validity
- Democratic deficit: citizens lack a voice in the process

# Sheffield City Region



# ‘Sheffield City Region’: The Organisation

- Coordinates economic development across the city region
- Representatives of all local authorities, district, county and national park.
- Joint Issue Boards set up to tackle specific issues
  - Skills, transport, innovation and knowledge economy
- Stated aim is to increase GDP by 12.2% by 2016

# Sheffield City Region: Political Linkages

- Fragmented
- 4 northern LADs are part of Yorkshire and Humberside region
  - collaborated in Objective 1 Programme (2000-2008)
- 6 southern LADs are part of East Midlands region
  - Bolsover, Chesterfield and NE Derbyshire work together

# Sheffield City Region: Economic Linkages

- Fragmented – many small economies
  - Sheffield/Rotherham is an independent (core) economy
  - Doncaster: independent and isolated economy
  - Barnsley: part of Sheffield and Leeds economies
  - Chesterfield: part of Sheffield and Derby economies
  - North East Derbyshire and Derbyshire Dales: part of the Derby economy



**Sheffield City Region is not a  
coherent political or economic  
entity**

# Economic Development Agencies in the Sheffield City Region

- Economic development in the Sheffield City Region involves at least 27 different organisations, plus 9 local authorities
- ‘Institutionally thick’ ...
- ... Or chaotic?

Yorkshire Forward	East Midlands Development Agency	Alliance Sub-regional Strategic Partnership
Business Link Yorkshire	Business Link East Midlands	UKTI Yorkshire/Trade Yorkshire
UKTI East Midlands	Sheffield City Region	Coalfields Regeneration Trust
Skills Funding Agency Yorkshire and Humber	Skills Funding Agency East Midlands	Solutions For Business (Sheffield LEGI)
Alliance for Enterprise (Bolsover LEGI)	Success Doncaster (Doncaster LEGI)	Renaissance South Yorkshire
Creative Sheffield	South Yorkshire Investment Fund	Homes and Communities Agency Yorkshire and Humber
Homes and Communities Agency East Midlands	Doncaster Business Innovation Centre	Advanced Manufacturing Park
Barnsley Business and Innovation Centre	Chesterfield Innovation Centres	Barnsley Digital Media Centre
Finance Yorkshire	East Midlands Innovation	Yorkshire Innovation

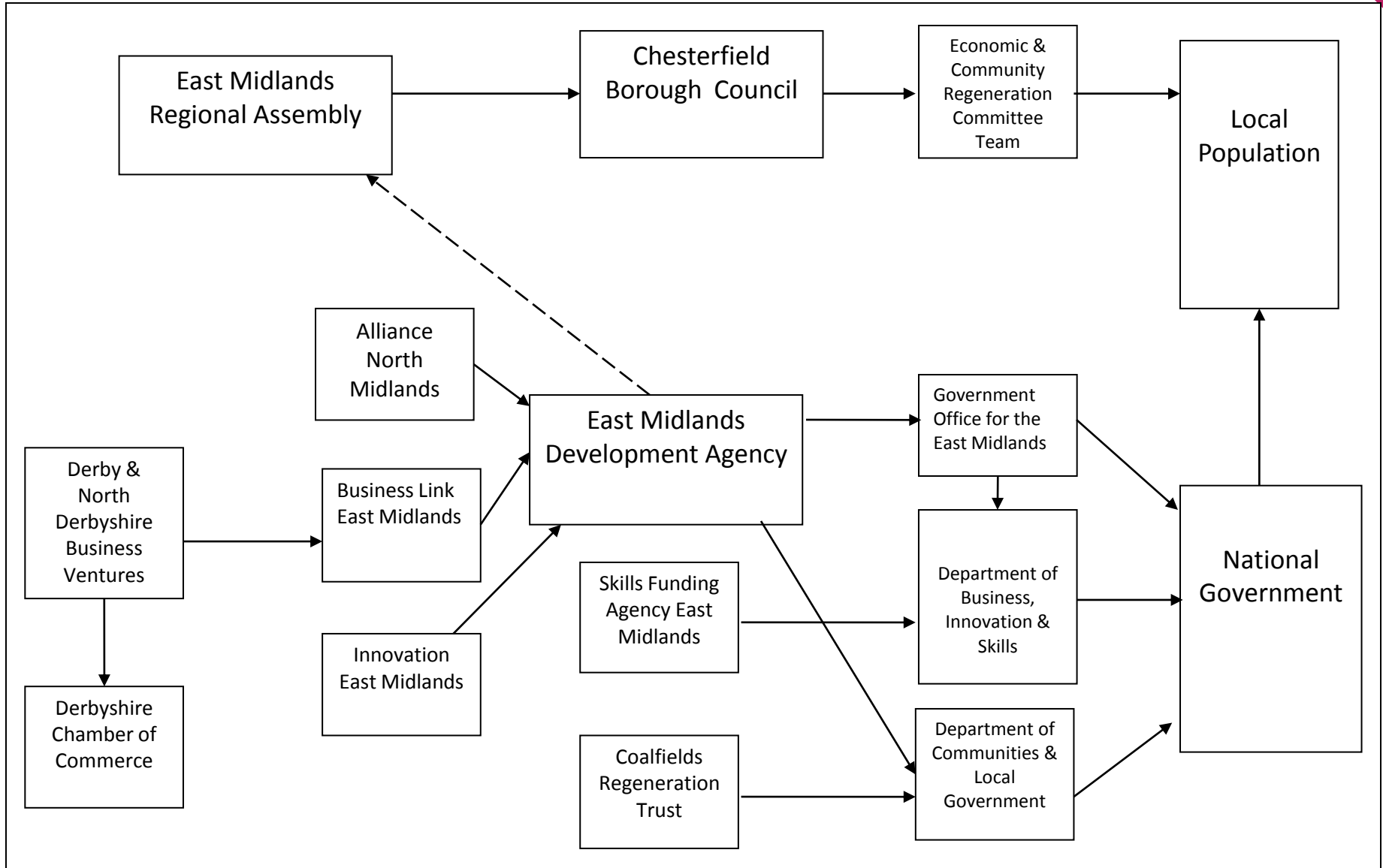
# Spatial Remit of Organisations

District Level	Sub-regional Level	Regional Level
Alliance for Enterprise (Bolsover LEGI)	South Yorkshire Investment Fund	Yorkshire Forward
Success Doncaster (Doncaster LEGI)	Alliance Sub-regional Strategic Partnership	East Midlands Development Agency
Solutions For Business (Sheffield LEGI)	Coalfields Regeneration Trust	Homes and Communities Agency Yorkshire and Humber
Renaissance South Yorkshire		Homes and Communities Agency East Midlands
Creative Sheffield		Business Link East Midlands
Doncaster Business Innovation Centre		East Midlands Innovation
Chesterfield Innovation Centres		Yorkshire Innovation
Advanced Manufacturing Park		Finance Yorkshire
Barnsley Digital Media Centre		UKTI East Midlands
Barnsley Business and Innovation Centre		UKTI Yorkshire and Humber

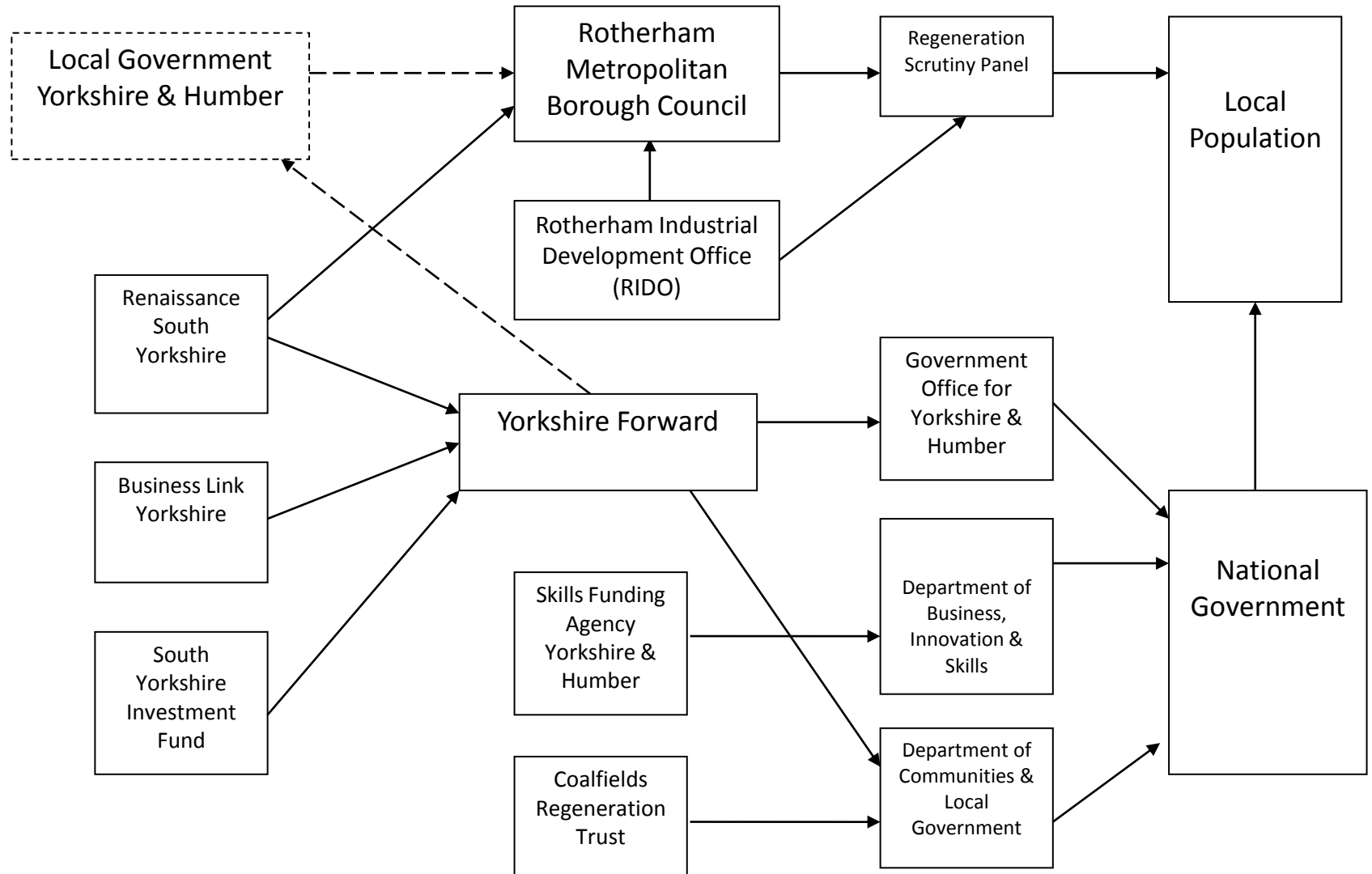
# Local Authorities

Local Authority	Economic Development Department	Internal?
Barnsley	Barnsley Development Agency	No
Bassetlaw	Economic Development Unit	Yes
Bolsover	Economic Development Team	Yes
Chesterfield	Economic Development Unit	Yes
Derbyshire Dales	Economic Development Unit	Yes
Doncaster	The Investment Team	No
North East Derbyshire	Economic Development Unit	Yes
Rotherham	Rotherham Industrial Development Unit (RIDO)	No
Sheffield	City Development Division	Yes

# Chesterfield: Organisation Map



# Rotherham: Organisation Map



# Initial Thoughts - Revisited

- Is there scope for local people to influence the process of economic development in the Sheffield City Region?
  - Formally, there are few links with local elected officials
- *Should* local and regional economic development benefit the local population - or merely local businesses? (cf. Wood and Valler, 2002)
- A democratic deficit could be an advantage – do the public care (20-25% average turnout in local elections)?

# Questions?

- Aim is to map the process of economic development in the Sheffield City Region:
  - Autonomy
  - Intra-regional competition
  - Links between policymakers and local elected officials
  - Consultation of the public in the process
  - Comparison with other city regions in the UK and the rest of the world

# Contact Details

- Andrew Johnston, Sheffield Business School
- Email: [a.johnston@shu.ac.uk](mailto:a.johnston@shu.ac.uk)
- Twitter: @andrewj79